

# ACE MENTOR PROGRAM

# OF WASHINGTON

# INDUSTRY LEADERS RECEPTION

*Career Directions of High School Students in  
Architecture, Construction, and Engineering*

**MONDAY, JUNE 3, 2024**  
5 - 7 PM

**The Shop**  
**LMN Achitects**  
723 First Avenue  
Seattle, WA



# SPONSORS & SUPPORTERS

SUSTAINING FIRMS\*

Platinum (\$10,000)

H A R G I S \*

MACKENZIE.

MAGNUSSON  
KLEMENCIC  
ASSOCIATES



Structural + Civil Engineers

*Partnering Organizations*

American Council of Engineering Companies, Washington\*

Design Build Institute of America, Northwest Chapter\*

Structural Engineers Foundation of Washington

# SPONSORS & SUPPORTERS

SUSTAINING FIRMS\*

Gold (\$5,000-\$9,999)



Sellen  
Community  
Foundation



# SPONSORS & SUPPORTERS

## SUSTAINING FIRMS\*

### Silver (\$2,500-\$4,999)

Affiliated Engineers, Inc.\*  
Ascendent LLC  
Coughlin Porter Lundeen\*  
DCI Engineers\*  
DL Henricksen  
DPR Construction  
HDR, Inc.  
Howard S. Wright, a Balfour Beatty Company\*  
Integrus Architecture\*  
ISEC  
KPF Consulting Engineers\*  
Malsam Tsang Structural Engineering  
Miller Hull Partnership\*  
Mithun\*  
PCS Structural Solutions  
SABA + Boulder Associates  
Valley Electric\*  
Venture General Contracting  
ZGF Architects\*

### Bronze (\$1,000-\$2,499)

ACCO Engineered Systems	Northshore Exteriors
Cairncross Hempelmann*	P2S, Inc.*
Coffman Engineers*	Patriot Fire Systems*
DLR Group*	Ron Wright and Associates/Architects*
EBD Services	Schnitzer West
FREIHEIT Architecture*	Swenson Say Faget*
McKinstry Company*	University Mechanical Contractors, Inc.
Navix Engineering*	Walters & Wolf
	Wood Harbinger*

### Iron (\$500-\$999)

AESI

Armour Unsderfer Engineering

Holmes

W.G. Clark



Seneca Group is proud to support the  
ACE Mentor Program's celebration and  
scholarship recipients.

1191 Second Ave., Suite 1500  
Seattle, WA 98101  
206.628.3150

2011 Crystal Drive, Suite 250  
Arlington, VA 22202  
202.984.3183

**SENECA | GROUP**  
[www.senecagroup.com](http://www.senecagroup.com)

Cornerstone General Contractors provides preconstruction and construction management services in Western Washington to build community-based spaces and facilities for justice, health care, and K-12 education.

We proudly sponsor the ACE Mentor Program, and we look forward to meeting the next generation of Architects, Engineers, and Construction Managers.



[CornerstoneGCI.com](http://CornerstoneGCI.com) | 425.481.7460 | Lic.# CORNEGC980J3



# BOARD OF DIRECTORS

Bill Christopher, Magnusson Klemencic Associates | Secretary/Treasurer  
Brad Strandquist, Magnusson Klemencic Associates | Vice President  
Bryan Tokarczyk, GRID Engineers  
Candace Conroy, AGC Education Foundation  
Casey Riske, Miller Hull Partnership  
Debi Hudacek, Seneca Group | Vice President  
Jeff Klein, PCS Structural Solutions  
Jen Caudle, FREIHEIT Architecture  
Jon Magnusson, Magnusson Klemencic Associates | Founder  
Kalin Magruder, Sellen Construction  
Kyle McLeod, Hainline  
Mahi Demissie, Vulcan  
Maria Herrera-Lofton, Seattle Public Schools  
Mark Gardner, McKinstry  
Matthew Woo, Wood Harbinger  
Melissa Moffett, Tacoma Public Schools  
Mike Thomson, P2S, Inc.  
Osama Quotah, LMN Architects  
Pete Maslenikov, Skanska | President  
Sara Roberts, KPFF Consulting Engineers  
Sarah Holstedt, Arcadis | Vice President  
Terry Scanlan, Cairncross & Hempelmann  
Tess Wakasugi-Don, GLY Construction  
Troy Thrun, Stantec  
Van Collins, ACEC Washington  
*and* Angela Gottula Twining | Executive Director

# SCHOLARSHIP COMMITTEE

Sara Roberts, KPFF Consulting Engineers | Chair  
Mahi Demissie, Vulcan  
Ruth Baleiko, Miller Hull Partnership  
Osama Quotah, LMN Architects  
Haniyyah Madyun, Hensel Phelps  
Ivan Tsang, Malsam Tsang Structural Engineering  
Troy Thrun, Stantec

# PROGRAM

## *Welcome & Sponsor Recognition*

Pete Maslenikov, Skanska | ACE President

## *Platinum Sponsor Remarks*

Andy Fry, Magnusson Klemencic Associates  
Shannon Brush, Hargis  
Michael Chen, Mackenzie

## *Outstanding Mentor & Mentor Recognition*

Brad Strandquist, Magnusson Klemencic Associates | ACE Vice President

## *Scholarship Recipients*

Sara Roberts, KPFF Consulting Engineers | ACE Scholarship Committee

**SKANSKA**

Skanska shapes the Seattle community  
by building what matters.



# ABOUT ACE

ACE is a 501(c)3 not-for-profit with a mission to engage, excite, and enlighten high school students to pursue careers in the integrated construction industry through mentoring. Originating in New York in 1994, ACE is a national program with **71** affiliates in the US & Canada.

ACE is the only program that introduces high school students to the full process of designing and building a project, as well as all facets of the design and construction industry. Since 2001, more than **4,000** Puget Sound students have participated in ACE, with graduates receiving just shy of **\$1.4 MILLION** in scholarships.

This year **362** students from **78** high schools participated in ACE, joining **220** professional mentors from **79** local A/E/C firms and forming **15** teams that covered Seattle, Bellevue, Tacoma, and a virtual option.

ACE works! About **75%** of seniors who complete ACE study an A/E/C field at a university or trades program. More than **80%** of ACE students surveyed agree ACE taught them skills and knowledge of the building industry. Plus, countless ACE alumni are back in Seattle, working for firms that mentored them and even mentoring themselves with ACE!

## Proud Supporter of the **ACE MENTOR PROGRAM**





# ACE SUPPORTS STUDENTS

It is estimated this ACE program runs on a \$1.5-million budget, with much of that provided as in-kind donations of volunteer time (and pizza!). Funds from corporate partners, professional organizations, and individuals (like mentors, parents, and other supporters), go toward administrative costs, insurance, events, and more. It costs about \$295 per student to run ACE, but these donations allow ACE to be offered free of charge for students!

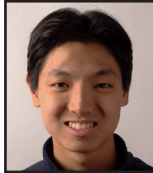
The majority of donated funds are given as scholarships to students pursuing A/E/C majors in college, but funds also go toward programs like the **ACE SUMMER CAMP** at University of Colorado, Denver. This year five ACE students will attend Summer Camp, thanks to your donations!



**Ava  
Pittiglio**  
Holy Names



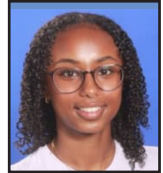
**Brooke  
VanRavenswaay**  
Curtis



**Charles  
Liu**  
Newport



**Mihika  
Venkateswar**  
Int'l Community



**Solyana  
Endashaw**  
Seattle Prep

# WOMEN IN ENGINEERING

ACE is pleased to announce the establishment of a **WOMEN IN ENGINEERING ENDOWMENT**, made possible by several sizable donations and a focused fundraising campaign. The endowment committee is pleased to announce



its first expenditure, a Women in Engineering **ALUMNA AWARD**. Congratulations to Jamie Zimmerman, a 2021 graduate of Newport High, ACE alumna and scholarship recipient, and current junior at Cal Poly in San Luis Obispo, pursuing architectural engineering. She is receiving the inaugural \$5,000 Women in Engineering Alumna Award.

*Jamie says: "I am deeply grateful for the support of ACE and am honored to be a recipient of your generosity. Thank you for believing in me and for your unwavering support. I look forward to continuing to represent ACE and to making meaningful contributions to the field of structural engineering."*

# SCHOLARSHIP RECIPIENTS

## Alexandra Borodin



**High School:** Roosevelt High School

**Years in ACE:** 3

**College:** Barnard College

**Intended Major:** Architecture

**Fun Fact:** Alexandra has an identical twin sister, Naomi! Luckily, she will also be attending Barnard, but unluckily, so far she isn't planning to pursue architecture.

**Alexandra says:** *"Each year that I have been part of the ACE mentor program, I have been fortunate to work with kind, smart, and creative mentors who graciously donate their time and energy. My mentors have taken an interest in who I am and what I can contribute to the project. They have provided me with opportunities to learn and ask questions about the field."*

## Amari Katagiri



**High School:** Henry M. Jackson High School

**Years in ACE:** 2


**College:** University of California, Irvine

**Intended Major:** Structural Engineering

**Fun Fact:** Amari is active in his community, organizing events and volunteering with the Mill Creek Youth Advisory Board and leading activities and enhancing social skills through

a mentoring program with Tambark Creek Elementary School in Bothell.

**Amari says:** *"During this last year of ACE, I found structural engineering to be more aligned with my abilities and interests than architecture was. Thanks to ACE, I was able to find the profession I wanted to pursue, without ACE I would have still been lost. Thanks to the guidance of ACE I have a jump start in my career and was able to gain some connections with the engineering industry."*



team beyond  
the project

THANK  
YOU!  
students & mentors

**H A R G I S**  
proud ACE Program Partner

# SCHOLARSHIP RECIPIENTS

## Anhelina Melnychuk



**High School:** Kent-Meridian High School

**Years in ACE:** 1

**College:** University of Washington

**Intended Major:** Architecture

**Fun Fact:** Anhelina is no stranger to UW, having participated twice in its six-week Upward Bound program, organizing events, serving as student ambassador, and giving

presentations, including one on housing given on the Central Plaza.

**Anhelina says:** *"This was my first year in ACE and I felt the imposter syndrome. This program helped me to build confidence in my abilities, I learned to speak up and take the opportunity to learn when confused. In college, I hope to keep trying and do things that seem intimidating to me like ACE was in the beginning. I plan to participate in more collaborative projects and learning opportunities in college like ACE."*

## Ashley Mendoza



**High School:** Tacoma School of the Arts

**Years in ACE:** 2

**College:** University of Washington

**Intended Major:** Construction Management

**Fun Fact:** Ashley comes from a family of construction workers, and she has been helping her father with building projects for most of her life. Impressively, she is OSHA

10 certified, forklift certified, and flagger certified!

**Ashley says:** *"I am a first-generation Latina student aiming to get a better education and make a difference in my community. I can handle many responsibilities and I crave learning about new things. Construction Management is exactly that. You are always learning something, whether it be about different trades, new codes, or regulations. I want to be able to influence my community and show anything is possible, no matter where you come from."*

# SCHOLARSHIP RECIPIENTS

Brianna Ong



**High School:** Redmond High School

**Years in ACE:** 2

**College:** University of Washington

**Intended Major:** Construction Management & Computer Engineering

**Fun Fact:** During the pandemic, Brianna started a business with her sisters selling hand-painted cards, crochet animals, and

handmade earrings at community markets; to date, they have donated more than \$1,500 in proceeds to Harborview Medical Center.

**Brianna says:** *“ACE has given me invaluable opportunities to explore the industry, provided me a strong community of friends and mentors, and instilled within me a passion for construction management. I hope to return to the ACE program as a mentor to not only see how much I’ve learned, but to spark the same kind of curiosity in the next generation of students.”*

## ENGINEERING ICONIC PROJECTS



Mechanical | Electrical | Technology | Acoustics | Lighting



720 3rd Avenue, Suite 1500 | Seattle, WA | 206.667.0555

# SCHOLARSHIP RECIPIENTS

*Elinor Assadi*



**High School:** University Preparatory Academy

**Years in ACE:** 4

**College:** Cornell University

**Intended Major:** Mechanical Engineering (Pre-Architecture)

**Fun Fact:** Elinor is exceptionally talented at the violin, participating in the UPrep

chamber orchestra for four years (serving as Concertmaster), competing at many state Solo and Ensemble competitions, and receiving countless awards for her performances.

**Elinor says:** *"I am so proud to have been part of the ACE community for all four years of high school, and I will take with me my many experiences, connections, and knowledge of the ACE field to college and beyond. Thank you to all my mentors past and present and the people who make this program possible; I genuinely am so lucky to have benefited from their efforts."*

*Erisa Baba*



**High School:** Lake Washington High School

**Years in ACE:** 1

**College:** Whitman College

**Intended Major:** Civil Engineering & Physics

**Fun Fact:** Erisa has juggled playing for three soccer teams: Varsity for four years at LWHS, club soccer, and an academy soccer team, earning awards in each and playing at

state, regional, and national tournaments for many years.

**Erisa says:** *"Building designs and construction influence the way people interact as well as the way people feel in that space. As an aspiring engineer, I want to be able to design and build with the intention of creating an environment where people are lifted by the design."*



ACE STUDENTS & VOLUNTEER MENTORS —  
**Congratulations  
on a Great Year!**



For over two decades, Magnusson Klemencic Associates has been a proud sponsor of the ACE Mentor Program of Washington.

**CONGRATULATIONS TO ALL  
THE SCHOLARSHIP WINNERS!**



We look forward to working with the next generation of AEC leaders!

MAGNUSSON  
KLEMENCIC  
ASSOCIATES



Structural + Civil Engineers

# SCHOLARSHIP RECIPIENTS

## Eva Schneider



**High School:** West Seattle High School

**Years in ACE:** 1

**College:** California State Polytechnic University, Pomona

**Intended Major:** Architecture

**Fun Fact:** A skateboarder for many years, Eva has worked in the community to create equity for those interested in skateboarding,

including managing a community group for skateboarders and volunteering at the Skate Like a Girl camp for kids.

**Eva says:** *“Architecture has always been ‘the career’ for me. For as long as I can remember, I have been crafty. I love hands-on projects, making designs, and creating new things. Most of all, I love the puzzle of trying to figure out the best design to meet all of a project’s goals.”*

## Fiona Mullen



**High School:** Holy Names Academy

**Years in ACE:** 2

**College:** Gonzaga University

**Intended Major:** Civil Engineering

**Fun Fact:** Fiona has worked for the past several years as a Camp for Curious Minds counselor at the Pacific Science Center, leading a STEM-based curriculum to campers aged 3 to 14, complete with hands-on activities and games.

**Fiona says:** *“My experience with my ACE mentors has been nothing short of amazing. One thing I appreciate is how present they are during meetings. Despite being busy adults, they always pay 100% attention to our activities and presentations, though I’m sure they have heard the material many times over. I also had no idea how much fun engineers have together. Meeting so many diverse, kind, and funny mentors has made me very enthusiastic about studying engineering. One day I truly hope to return to ACE as a mentor.”*



# SCHOLARSHIP RECIPIENTS

*Kelly Leong*



**High School:** Inglemoor High School

**Years in ACE:** 2

**College:** University of Washington

**Intended Major:** Architecture

**Fun Fact:** Inglemoor is being remodeled, and Kelly joined the school Design Advisory Team, spending time with the selected architectural consultants and participating

in job shadows and site visits with the firm last summer.

**Kelly says:** *"I remember going on a tour of a school that was 90% finished, and we walked around touching the texture of the wall, feeling the smooth tile in the bathroom, scrutinizing the imperfections in the stairwell landings. It wasn't just the doors and windows that architects poured over, it was everything. Every single detail that their team chose was intentional from start to finish, and it was then where I was certain of my interest in architecture."*



SHAPING THE  
WORLD OF THINGS  
TO COME

CLICK TO  
LEARN MORE



Mortenson®

LET'S  
REDEFINE  
POSSIBLE™

# LMN has been a proud sponsor of the ACE Mentoring Scholarship Program since 2001!

Congratulations to all of this year's scholarship recipients!



## BUILDING BETTER FUTURES WITH ACE



### Proud Member & Sponsor of ACE

Want a better outcome for your project? We do. Our team of design and construction performance management experts believe better is always possible.

Congratulations to ACE for their 20+ year impact of encouraging, empowering, and inspiring the builders of tomorrow!

We want to hear your journey. Connect and share with us!

[in](#) [f](#) [t](#) [@](#) [www.oacsvcs.com](http://www.oacsvcs.com)



# SCHOLARSHIP RECIPIENTS

## Madison Kulinski



**High School:** Interlake High School

**Years in ACE:** 3

**College:** University of Wisconsin

**Intended Major:** Mechanical Engineering

**Fun Fact:** Madison, who has been learning Spanish and hopes to be fluent one day, authored a motivational novel incorporating lessons taken from study of the Darien Gap

in Panama – a country she would love to visit one day.

**Madison says:** *“Before I joined ACE, the build industry was a monolith – a black box that pumped out fully formed structures, but ACE highlights every part of the design process, from the owner’s reps to the subcontractors. It increased my confidence because I understand the distinct parts of the build industry and the opportunities available there.”*

## Micah Cholerton



**High School:** Ballard High School

**Years in ACE:** 1

**College:** California Polytechnic State University, San Luis Obispo

**Intended Major:** Architecture

**Fun Fact:** Micah has always considered himself creative, enjoying Legos, Minecraft, woodworking, and ceramics – the latter for

which he received the 2023 Public Art Show Award from the Seattle Art Museum’s Naramore Art Show for middle and high school students.

**Micah says:** *“Working with other people and mentors taught me there is more than just one way to do something. It has also impacted my course of study – while I appreciate design, engineering, and project management even more than I did, I also know that the architecture focus is right for me. It was invaluable to be exposed to the power of all these disciplines and how they work together, and where I fit in.”*

# SCHOLARSHIP RECIPIENTS

## Rachel Bender



**High School:** Roosevelt High School

**Years in ACE:** 4

**College:** Cornell University

**Intended Major:** Architecture

**Fun Fact:** The list is quite long of community organizations Rachel is involved with: Hands for a Bridge Cultural Exchange, Camp Fire Girls, the RHS River Restoration Club

and Link Crew, and the local food bank.

**Rachel says:** *"ACE has helped me solidify that architecture is my passion through four years of great RFP projects and activities. It has allowed me to get hands on with real simulated projects in a way I never would have been able to otherwise. It has been a great opportunity to see what it is really like to be an industry architect and designer."*

## Selome Murutz



**High School:** Seattle Preparatory School

**Years in ACE:** 2

**College:** University of Washington

**Intended Major:** Civil Engineering

**Fun Fact:** At the suggestion of a mentor who encouraged her to develop her communication skills, Selome started participating in theater and performance, becoming a

solo vocalist at school and community events. She plans to minor in vocal performance and join acapella groups while in college.

**Selome says:** *"As I learned from my mentors, the construction field puts you right at the epicenter of all of the scopes of the design which creates our great city of Seattle's built environment. ACE's unique model of combining Architecture, Construction, and Engineering scopes to high school students demonstrated the connection between engineering and construction. I hope to use my engineering degree to help my career in construction."*

# ACE MENTORS FOR WILL

GIVE IT YOUR ALL.  
GIVE BLOOD.



JOIN THE ACE VIRTUAL BLOOD DRIVE

MAY 20 TO JUNE 25



Calling all students, mentors, alumni, and friends! We were shocked to learn that **Will Turpin**, an ACE student from Jackson High on Thursday Seattle Team 1, was just diagnosed with Acute Promyelocytic Leukemia and is undergoing intensive treatment at Seattle Children's. To support Will and others in our area, join ACE in a **virtual blood drive**! Scan the QR code to make an appointment at any Bloodworks NW location or current blood drive. Use the code **"WILL"** when you check in!



BloodworksNW.org / 800-398-7888

## CONNECT



"LIKE" US ON FACEBOOK!

[WWW.FACEBOOK.COM/SEATTLEACE](http://WWW.FACEBOOK.COM/SEATTLEACE)



FIND US ON LINKEDIN

[LINKEDIN.COM/COMPANY/SEATTLEACE](http://LINKEDIN.COM/COMPANY/SEATTLEACE)



FOLLOW US ON INSTAGRAM!

[@ACEMENTORSEATTLE](https://www.instagram.com/acementorseattle)



SUBSCRIBE ON YOUTUBE

SEARCH "ACE MENTOR WASHINGTON"



Breakthroughs that change patients' lives®

# MENTORS

## INDIVIDUAL TEAM LEADERS IN BOLD

### REQUEST FOR PROPOSAL TEAM

These mentors worked with ACE leadership to create the RFP for the 2023-2024 student project, and served as "Owner's Representatives" all year.

Conner Hayes, Blitz Holdings  
Luis Martinez, Gemdale  
Avra Platis, Seneca Group

**Matthew White, LIHI**  
Mike Moriarty, Seneca Group  
Robyn Gordon, Seneca Group

### STUDENT ADVOCATES TEAM

These mentors worked one-on-one with students to improve program retention, as part of ACE's Diversity Inclusion Initiative.

Amira Sherbiny, Skanska  
Darius Felder, Hargis  
Davila Parker-Garcia, Weinstein A+U  
Deb Hudacek, Seneca  
EB Meyer, Weinstein A+U  
Eden Lindeman, GLY  
Emily Osurman, AEI  
Gavin Leaverton, GLY  
Hulya Kayir, Sellen  
Isaiah Coleman, Lund Opsahl

Jane Kim, GLY  
Jonathan Chow, LCL  
Kiley Brennan, CollinsWoerman  
Lauren Gallagher, GLY  
Mahlet Demissie, Vulcan  
Mauricio Ayala, Lund Opsahl  
Mercedes Gamor, Prime  
Osama Quotah, LMN  
Tess Wakasugi-Don, GLY

### TUESDAY TACOMA TEAM

**Bethany Morales, Swenson Say Faget**  
Erin Kerney, Nature by Design  
Gregory Horodyski, Tacoma Power  
Jared Chapman, Mortenson  
Kallie Maas, McInnis Engineering

Karina Bovee, Swenson Say Faget  
Leah Engelhardt, Lydig  
Sarah Commet, Weddermann  
Architecture  
Scott Kubiszewski, LCL

### WEDNESDAY TACOMA TEAM

Abby Dorrell, Clark  
Francesco Alvau, Valley Electric  
Jaeden Biehn, Clark  
Jaycob Greissl, PCS

Noah Cochran, OAC  
Ray Vefik, Vefik Architecture  
Tayler Fischlin, Korsmo  
Theo Boyles, McKinstry

**Jessica Archer-Rucshner, Rice Fergus Miller**

### WEDNESDAY VIRTUAL TEAM

Beatriz Arostegui, MKA  
**Casey Riske, Miller Hull**

Geethika Yarlagadda, Turner  
Marjorie Anderson, Miller Hull

# MENTORS

INDIVIDUAL TEAM LEADERS IN BOLD

## TUESDAY BELLEVUE TEAM 1

Aprille Balangue, TF-WB  
Abhinav Bhargava  
Brent Robinson  
**Ethel Vural, Seagen/Pfizer**  
Alan Jacobson, Jacobson Consulting

Katie Christensen, OAC Services  
Miranda Otto, Dykeman  
Sarah Brown, Skanska  
Stephen Murakami, Hutteball + Oremus  
Steve Siebert, AESI

## TUESDAY BELLEVUE TEAM 2

Brett Conway, Mackenzie  
**Chris Kelley, GLY**  
Erik Bedell, GLY  
Garrett Goudy, Navix  
Jon Miller, Prime  
Kenneth Ebihara, Prime

Kyle Applebury, GLY  
Kyle Loria, DCI  
Michael Chen, Mackenzie  
**Tess Wakasugi-Don, GLY**  
Tyler Loudon, Navix  
Will Gonzales, Holmberg



Arcadis is proud to support the **ACE Mentor scholarship program** in the Puget Sound.

We congratulate all of this year's scholarship recipients!



Arcadis. Improving quality of life.

# MENTORS

## INDIVIDUAL TEAM LEADERS IN BOLD

### WEDNESDAY BELLEVUE TEAM 1

Ali Coskun, Mortenson  
Ava West, Mortenson  
Caroline Do, CollinsWoerman  
Chloe Dumas, TetraTech  
David Do, DLR  
Garret Parsons, Mortenson  
Grant Jordan, Mortenson

Jason Goetz, Holmberg  
**Joseph Tremblay, Valley Electric**  
Maddy Haut, Mortenson  
Michael Roberts, Hargis  
**Paige Adkinson, Mortenson**  
Taylor Sutton, Mortenson

### WEDNESDAY BELLEVUE TEAM 2

Bryan Tokarczyk, GRID  
Carolyn Corderio, Freiheit  
Christopher Hasenheyer, Hensel Phelps  
**Daniel Polgreen, Freiheit**

**Josiah Cline, Freiheit**  
Matthew Woo, Wood Harbinger  
Michael Thomson, P2S  
William Lundgren, Freiheit

### MONDAY SEATTLE TEAM

Abigail Desa, MKA  
Alana Vidmar, Stantec  
Alexander Muirhead, P2S  
Ashley Wells, Stantec  
Aziz Abdulla, P2S  
Daniel Lee, Skanska  
Elizabeth Espitia, MKA  
Gordon Krippaehne, HSWJBB  
Grace Nemeckay, Arcadis

Ryan Thornton, MKA  
**Saya Kajiwara, MKA**  
Simon Sosa, PAE  
Simone Dye, PAE  
Spenser Petherick, P2S  
Timothy Abbott, PAE  
Venkat Ashrith Jutoor Radhakrishna  
Setty, MKA  
Whitney Sloan, Skanska

### TUESDAY SEATTLE TEAM 2

Adam Bichir, LMN  
Amira Sherbiny, Skanska  
Ana Perarnau, CPL  
Brian Hoang, Stantec  
Bridget McFaul, CPL  
Camille Matile, Thornton Tomasetti  
**Christopher Martin, LMN**  
Emily Tupper, LMN  
Graham Condit, Skanska  
Javier Diaz, CPL

Jennifer Sasahara, LMN  
Joe Kaldestad, CPL  
Kai Reckinger, Skanska  
Katherine Rand, CPL  
Kevin Garrick, Skanska  
Laura Lindeman, CPL  
Miguel Maldonado, Stantec  
Nathan Lewis, Stantec  
Priyanka Jeevaretanam, CPL  
Sean Umeda, CPL



# MENTORS

INDIVIDUAL TEAM LEADERS IN BOLD

## TUESDAY SEATTLE TEAM 1

Alexander Jolly, ZGF  
Brady Barkey, DPR  
**Carolyn McCann, KPFF**  
**Catherine Bausinger, ZGF**  
Darren Schneider, KPFF  
Daviel Salgado, Stantec  
Devaki Ektare, DPR  
Ella Yazbeck, KPFF  
Emily Skalka, ZGF

Emma Cantor, ZGF  
Francisco Felix, KPFF  
Gabriel Olson, KPFF  
Jared Long, KPFF  
Joel Sterling, ZGF  
John Feiler, P2S  
Matthew Rothlisberger, ZGF  
Megan Larson, P2S  
Patrick Young, KPFF

## TUESDAY SEATTLE TEAM 3

Britnie Casillas, Turner  
Camille Fain, Turner  
Darius Felder, Hargis  
**David Roper, Hargis**  
Griffey Sarmiento, Hargis  
Jagrithi Nenawati, Buro Happold  
Jake Reny, Hargis  
Kedrick Sparks, Hargis

Kiley Brennan, CollinsWoerman  
Luke Bastian, Buro Happold  
Purvesh Luhar, Holmes  
Shahroz Khan, CollinsWoerman  
Spencer Grassi, Turner  
Tyler Pedro, MG2  
Tyr Bernard, Hargis  
Kelsey Pierson, Weinstein A+U

Invest in  
Each Other

PROUD TO SUPPORT ACE  
MENTOR PROGRAM

G ▶ L ▶ Y



# MENTORS

## INDIVIDUAL TEAM LEADERS IN BOLD

### WEDNESDAY SEATTLE TEAM 1

Akshay Srinivas, Miller Hull  
Alexander Ratcliff, PAE  
Amy Broska, SMR  
Becky Skondre, WJE  
Brannon Shalley, Abbott  
Jacky Chan, HDR  
Jonathan Nelson, Miller Hull

**Julia May, Miller Hull**  
Lan Nguyen, Swenson Say Faget  
**Matthew Johnson, Swenson Say Faget**  
Nathan Polanski, MIG  
Savanna Eaglen, OAC  
Thomas Ly, Venture

### WEDNESDAY SEATTLE TEAM 2

#### **Andrew Techico, Westlake Consulting**

**Connor Anderson, Sellen**  
Douglas McArthur, Mackenzie  
Hannah Knoot, Mackenzie  
Haylie Tallon, Coffman  
Joseph Albizures, Coffman  
Kazuki Kodama, Mackenzie  
Kyle Johnson, Coffman

Laura Chopp, Coffman  
Mia Pizzuto, Coffman  
Michael Blanchard, Coffman  
Rebecca Duff, Sellen  
Robert Gonia, Mackenzie  
Steven Cirone, Coffman  
Vyshnavi Ailoor Jaganathan, Sellen  
William Frederick, Coffman

### THURSDAY SEATTLE TEAM 1

Alex Young-Desmarattes, KPFF  
Alexis Crates, GGLO  
Brianna Rumburg, Tiscareno  
Danial Khan, KPFF  
Emily Osurman, AEI  
Jonathan Chow, LCL  
Joseph Blum, KPFF  
Justin Schmit, KPFF  
Kalina Kuneva, KPFF  
Kristin Montgomery, KPFF  
Matt Seel, AEI  
Michelle Fouard, AEI

Nicholas Paulay, AEI  
Norman Tible, AEI  
Parker Meade, HOK  
Samuel Gebremeskel, AEI  
Scott Cochran, GGLO  
Stephen Phillips, AEI  
Thomas Ferree-Gooding, Schultz Miller  
**Turner Solterman, KPFF**  
Will Kesler, KPFF  
Xiao Xiao Wen, KPFF  
Yair Buendia, Lease Crutcher Lewis

### THURSDAY SEATTLE TEAM 2

Anisha Chutani, Stantec  
Carl Dominguez, Mithun  
Casey Moore, Lund Opsahl  
Christopher Catron, Lund Opsahl  
Daniel Maier, Rushing  
**Daniel Swaab, Mithun**  
Ellie Elefson, Mayfly  
Geoffrey Gabala, HITT

Isaiah Coleman, Lund Opsahl  
Jason Wilkinson, Mithun  
**K Kaczmarek, Mithun**  
Katie McNair, HITT  
Kerry Garikes, Mithun  
Lani Lee, Mithun  
Lori Manderson, Mithun  
Mauricio Ayala, Lund Opsahl

# SUMMER HOSTS

ACE would like to thank several Puget Sound-area firms for participating in the ACE "Summer Experience" program, so students can receive a paid, in-office "internship" during high school. Thank you to these firms:

Freiheit Architecture  
DPR Construction  
Hargis  
Hensel Phelps  
Hutteball + Oremus  
KPF Consulting Engineers

Magnusson Klemencic Associates  
Miller Hull Partnership  
Mortenson  
Skanska  
Turner Construction

# THANK YOU

Thank you **LMN Architects** for facilitating our use of The Shop.  
Thank you **Navix Engineering** for printing the programs.  
Catering was provided by **Green Apple Events and Catering**.

Individuals are welcome to make a tax-deductible personal donation by check or by PayPal (via our website). Thank you for attending our event.

Sellen and the Sellen Community Foundation are proud supporters of the ACE Mentor Program.



Sellen  
Community  
Foundation



**LEARN MORE**

[www.sellen.com/scf](http://www.sellen.com/scf)



The ACE Mentor Program plays a pivotal role in introducing young people to the world of architecture, engineering, and construction. We celebrate with you 23 years of service in the Puget Sound area.

M.

