



# ACE MENTOR PROGRAM

ARCHITECTURE • CONSTRUCTION • ENGINEERING

## Greater Boston Affiliate **2022-2023 Annual Report**



# ACE MENTOR PROGRAM

ARCHITECTURE • CONSTRUCTION • ENGINEERING

## MISSION

ACE Mentor Program of Greater Boston (ACE) empowers diverse groups of high school students to explore the worlds of architecture, construction management, and engineering careers, and encourages them to pursue further education and opportunities in those professions. ACE engages, excites, and enlightens high school students to pursue careers in A/C/E fields. ACE accomplishes this through hands-on learning, mentorship by industry professionals, internships, and scholarships to college and trade schools.

[Read more about the ACE program >>](#)

## HISTORY

Launched in 1994, the ACE Mentor Program of America® is the construction industry's fastest-growing high-school mentor program in the country, reaching more than 10,000 students annually. ACE provides a way for professionals in the design and construction industry to mentor young people, through 75 affiliates across the nation. The ACE Mentor Program of Greater Boston (ACE) is the local affiliate, founded in 2007.



*Janine Byrne of PCA Design, current ACE President, with her firm's 2023 ACE summer interns.*

## A LETTER FROM THE PRESIDENT

### Dear ACE Supporters and Friends,

In the fall of 2022, the ACE Mentor Program returned to in-person sessions in Boston and Cambridge, with the most teams (7) we've ever fielded. In total, 122 students completed the full 15-week program this year. Some highlights of the 2022-2023 school year include:

- » This year, the Boston Society for Architecture honored ACE with its 2023 Commonwealth Award to mark our work to diversify the profession.
- » ACE met one of its key retention goals: 82% of the students who attended the first 3 weeks of the program completed the full 15-week challenge.
- » This summer, 32 ACE students had paid internships with local firms, the most ever.
- » We debuted a new and improved Trade Day in 2022, with more than 55 students trying out seven skilled trades such as masonry, electrical work, carpentry, and HVAC.
- » Thanks to the generosity of our sponsors, listed later in the report, ACE awarded \$210,000 in college scholarships to 31 graduating seniors, up from \$147,000 in 2020.
- » ACE has launched an initiative to support our alumni, and several alumni have landed full-time jobs in the industry.
- » Since ACE started our affiliate in Boston in 2007, we have awarded \$1,267,500 in scholarships to our graduating seniors to use in college, university, and trade school.
- » This year, ACE earned Guidestar Platinum status, a tribute to our commitment to transparency.
- » Mentors from 59 firms engaged with our students this year, giving their time, their attention, and their enthusiasm to prepare the next generation to enter our industry. Their commitment speaks volumes to our students, and for that, we thank them from the bottom of our hearts.

With gratitude,



Janine Byrne  
President



## SETTING THE SCENE

**Boston has just experienced a disastrous hurricane event that has wiped out a significant portion of the city. The mayor is calling for help in creating an Emergency Response Site to assist in providing temporary shelter and community, while the city rebuilds.**

During the 2022-2023 school year, 122 ACE students worked with their mentors for 15 weeks to design an Emergency Response Site for shelter and use by the community after a disastrous hurricane event, meeting certain cost, sustainability, and quick-build specifications. Students learned from their mentors how to consider siting the building(s), relationship to the group, adaptability, transportability, and environmental impact.

The program met afterschool in one virtual team and six in-person sites: Northeastern University, PCA Design (Cambridge), Wentworth Institute of Technology, the Boston Society for Architecture, Roxbury Community College, and SMMA (Cambridge). This is the most teams that we have ever fielded, thanks to a huge effort by our mentors. The students presented their designs at a Student Showcase event at Wentworth Institute of Technology in March 2023.



***“For me, the most valuable lesson [of ACE] was the importance of interdisciplinary cooperation. While I knew in some ways that an architect could never build a building alone, ACE revealed for me the true extent of what it takes to fully realize a project.”***

***–Juan B., ACE Class of 2023***



# TEAM 1 – NORTHEASTERN UNIVERSITY

## Team Lead

Hannah Schur, Langan

## Discipline Leads

### Architecture

Steven Le, PCA Design

### Site/Civil Engineering

Hannah Schur, Langan

### Construction Management

Andrew DeYoung, DPR  
Construction

### MEP Engineering

Katie Nugent, Cosentini  
Associates

### Structural Engineering

Stephen Holland, LeMessurier





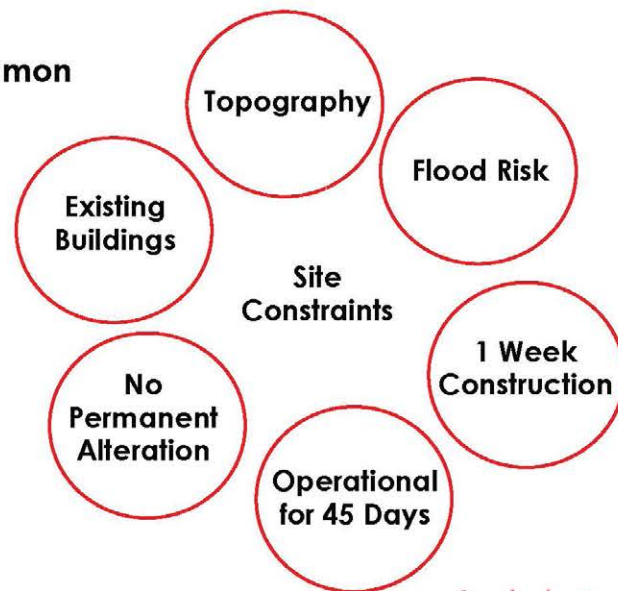
# SITE/CIVIL & LANDSCAPE ARCHITECTURE

Simao Andrade, Sarah Fung, Sofia Grady, Joana Gjini, Zlata Pavpertova,  
Tony Veliche, Wilson Zheng

Northeastern  
2022-2023

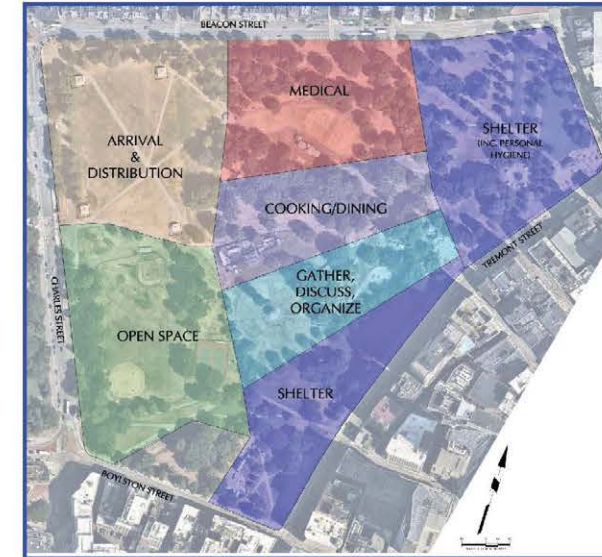
## Site Selection - Boston Common

- centrally located
- large
- public restrooms
- proximity to hospital
- open space
- accessibility
- parking
- proximity to highway



## Primary Site Features

- Arrival/distribution
- Medical
- Cooking/dining
- Shelter
- Personal care
- Open space
- Community meeting
- Gather/organize

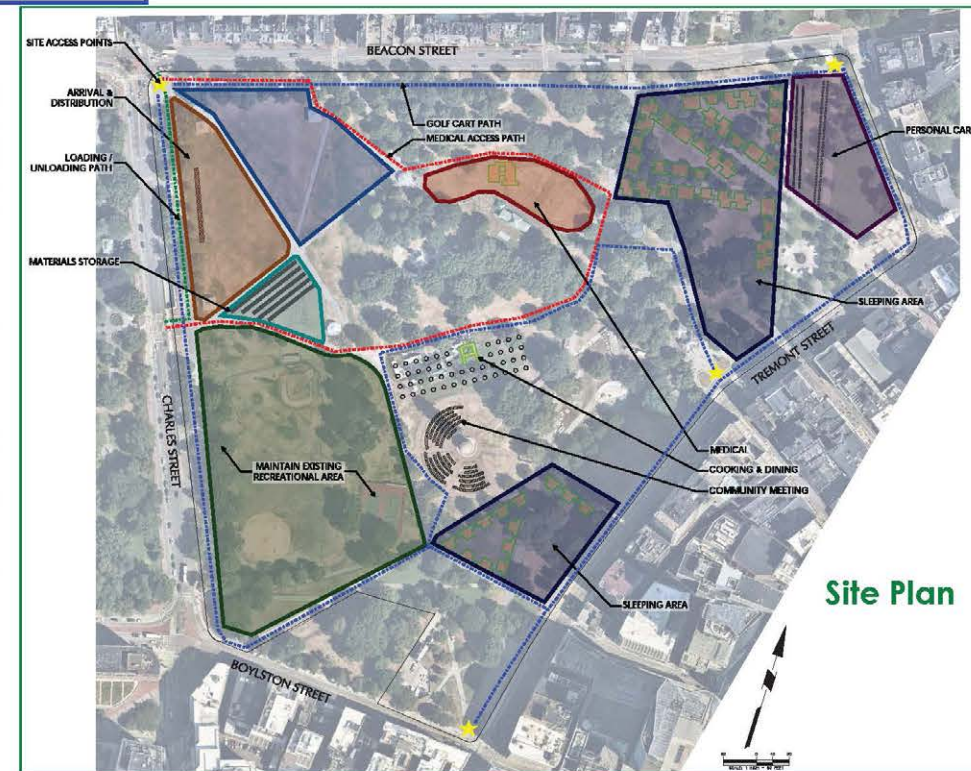
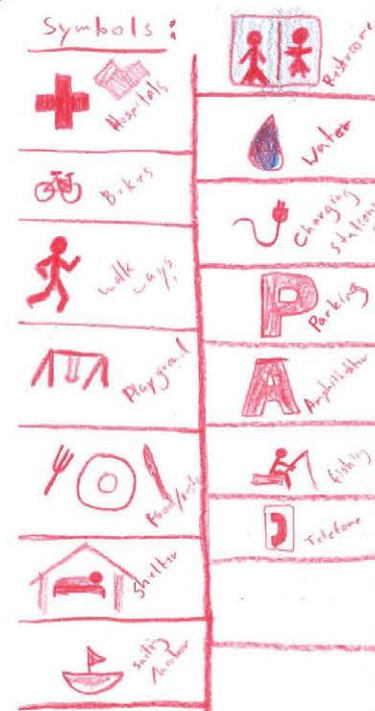
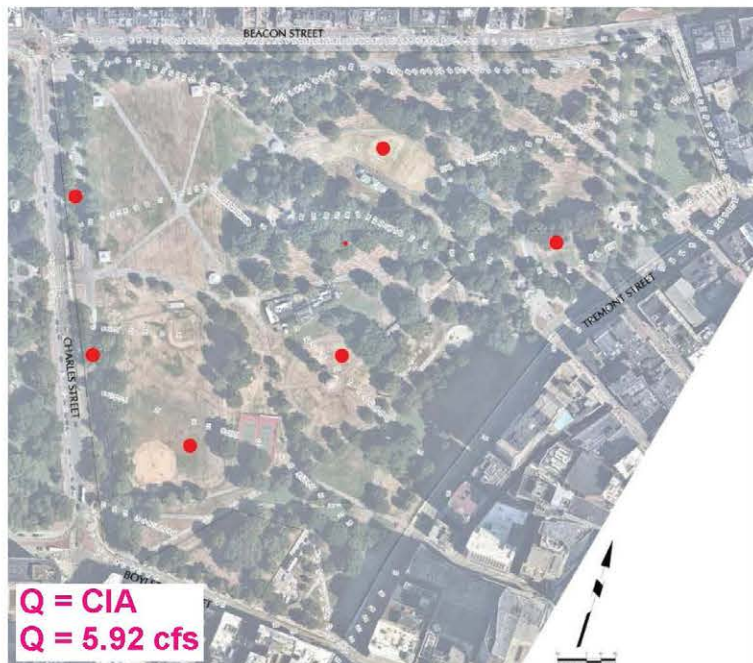


Design Iterations

Bubble Diagram



## Stormwater



[View full presentation deck from Team 1 >>](#)



## TEAM 2 – PCA

### Team Lead

Janine Byrne, PCA

### Discipline Leads

#### Architecture

Nidhi John, PCA

#### Site/Civil Engineering

Richard Schlichting, Langan

#### Construction Management

Michael Cross, DPR  
Construction

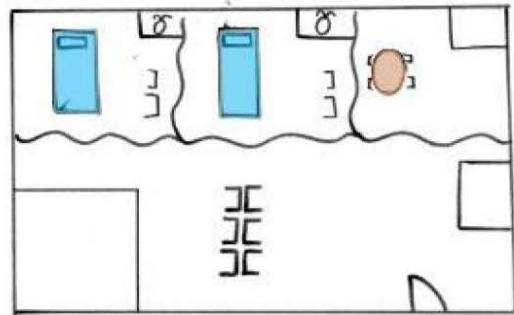
#### MEP Engineering

Lizandro Garcia, STV

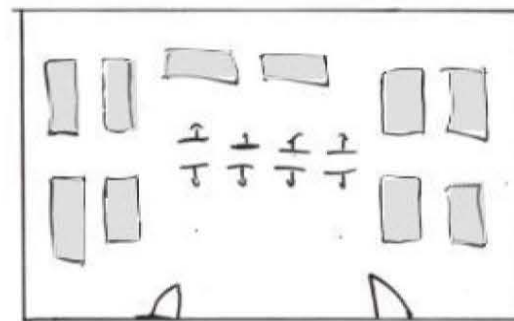
#### Structural Engineering

Robert Niccoli, TEC

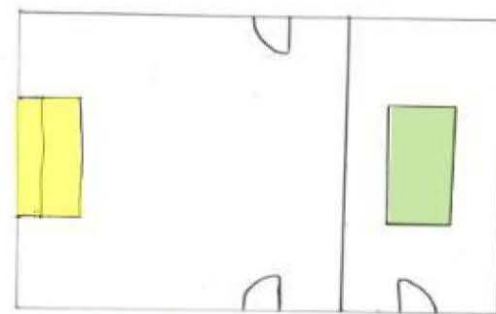




MEDICAL BUILDING



COOKING BUILDING



COMMUNITY BUILDING



SLEEPING QUARTERS – ROOF PLAN



SLEEPING QUARTERS – FRONT ELEVATION



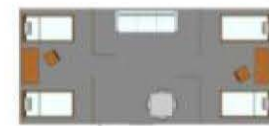
SLEEPING QUARTERS – RIGHT ELEVATION



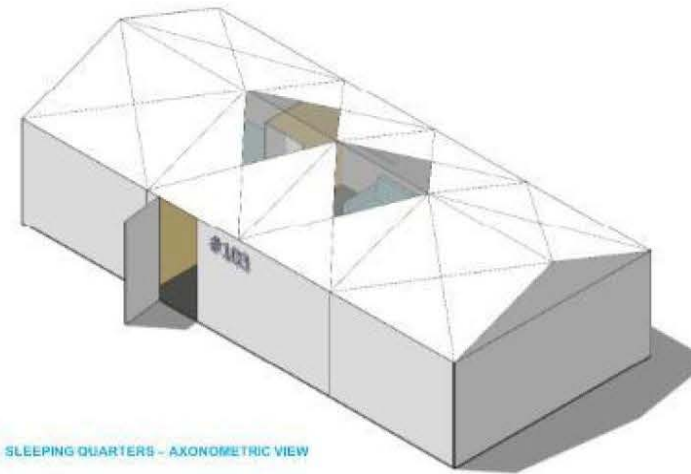
SLEEPING QUARTERS – REAR ELEVATION



SLEEPING QUARTERS – LEFT ELEVATION



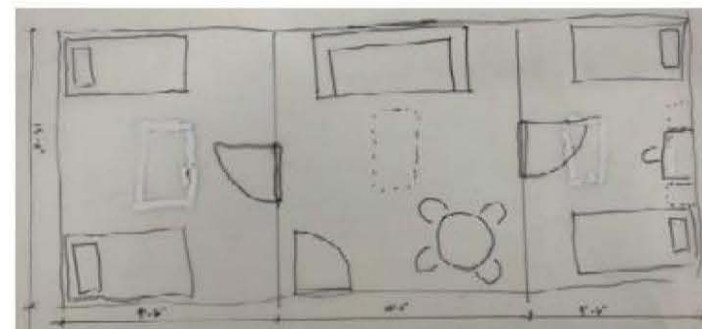
SLEEPING QUARTERS – FLOOR PLAN



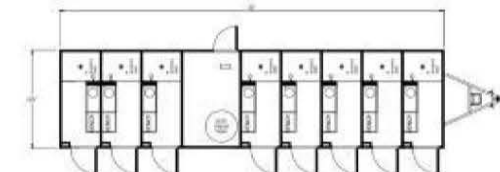
SLEEPING QUARTERS – AXONOMETRIC VIEW



SLEEPING QUARTERS – AXONOMETRIC VIEW



SLEEPING QUARTERS



**STUDENT SHOWCASE PCA SITE - MARCH 8, 2023**

Architecture Team: Sara Kahsay Solomon, Angell Nichols, Valentin Siskind, Orion Schrag

**ARCHITECTURE**

[View full presentation deck from Team 2 >>](#)



# TEAM 3 – WENTWORTH INSTITUTE OF TECHNOLOGY

## Team Lead

Casey Williams, SGH

## Discipline Leads

### Architecture

John Barker III, Gensler

### Site/Civil Engineering

Holly Ganser, New Leaf Energy

### Construction Management

Jordan Farren, Columbia  
Construction

### MEP Engineering

Ashley Tampellini, SourceBlue

### Structural Engineering

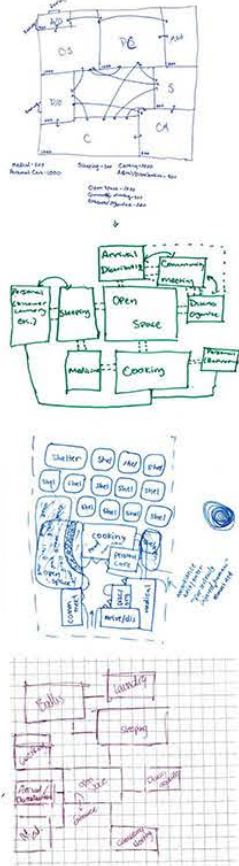
Kyle Karschner, SGH



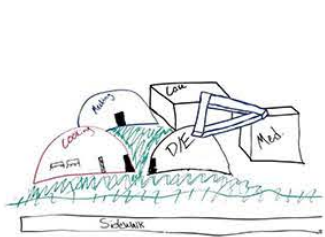




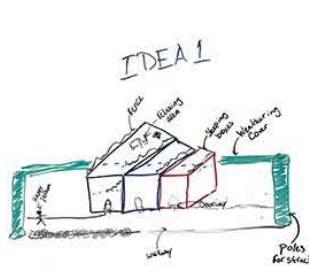
CONCEPTS



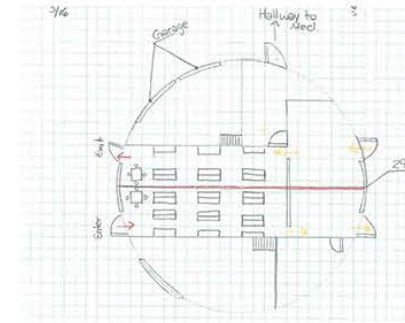
MASTER PLAN



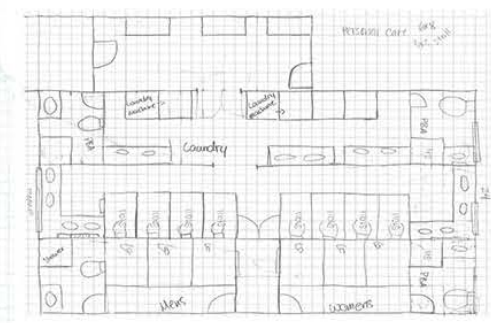
MASTER PLAN AXON



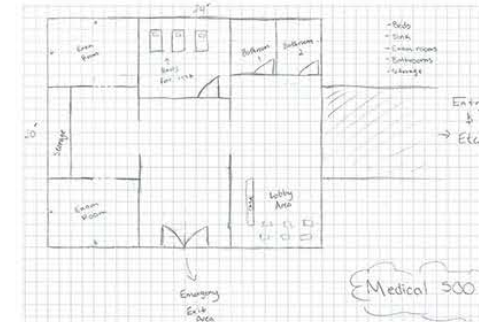
HOUSING AXONS



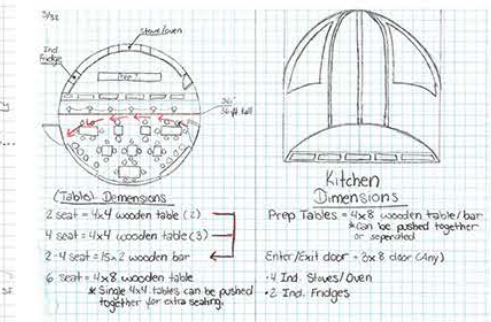
ENTRY & DISTRIBUTION



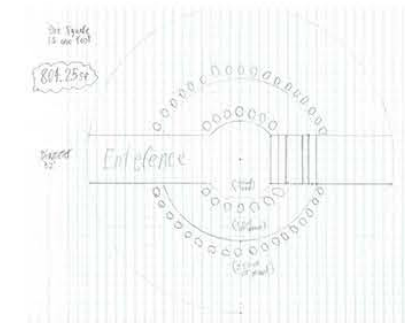
PERSONAL CARE



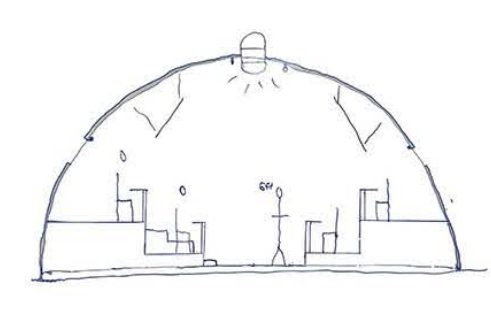
MEDICAL



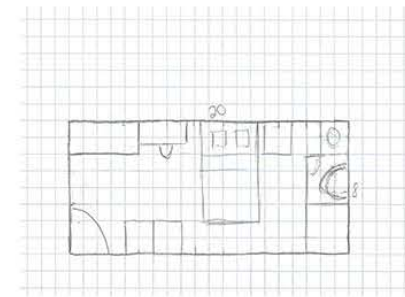
COOKING/DINING



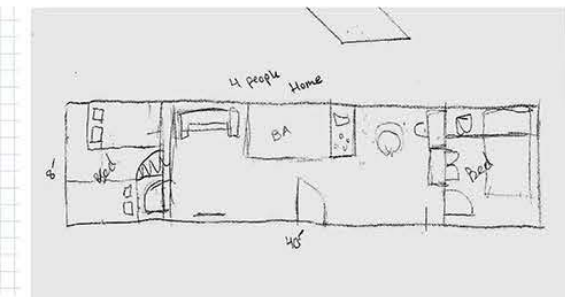
MEETING SPACE - PLAN



MEETING SPACE - SECTION



HOUSING PLAN - SMALL UNIT



HOUSING PLAN - LARGE UNIT



# TEAM 4 – BOSTON SOCIETY FOR ARCHITECTURE

## Team Lead

Elizabeth Mikula, Perkins and Will

## Discipline Leads

### Architecture

Elizabeth Mikula, Perkins and Will

### Site/Civil Engineering

Genevieve Shepard, Stantec

### Construction Management

Christopher Cheu, Skanska

### MEP Engineering

Michael Camoscio, STV

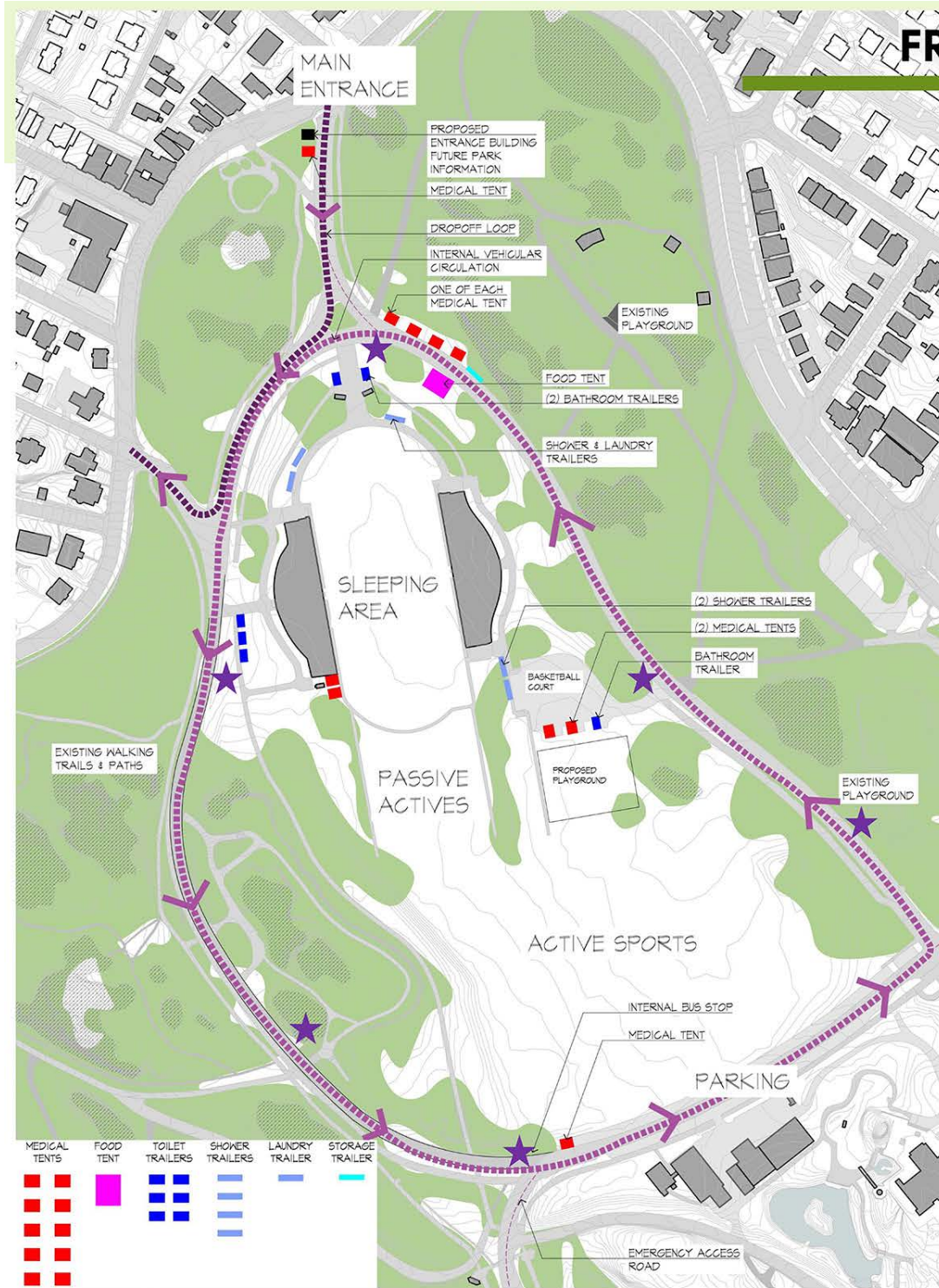
### Structural Engineering

Eric Braun, Thornton Tomasetti





# FRANKLIN PARK SITE DIASTER RELIEF PLAN



## PRECEDENT IMAGES

### OUTDOOR SEATING



### PASSIVE ACTIVITY



### ACTIVE SPORTS



### PLAYGROUND



### SITE ANALYSIS: Boston Parks & Recreation Department 'Franklin park Action Plan'



[View full presentation deck from Team 4 >>](#)



# TEAM 5 – VIRTUAL

## Team Lead

Jessica Rampino, Suffolk

## Discipline Leads

### Architecture

Josephine Penta, Finegold  
Alexander

### Site/Civil Engineering

William Granbery, Bohler

### Construction Management

Jessica Rampino, Suffolk

### MEP Engineering

Mary Kandaras, BuroHappold

### Structural Engineering

Katelyn Gendron, Thornton  
Tomasetti

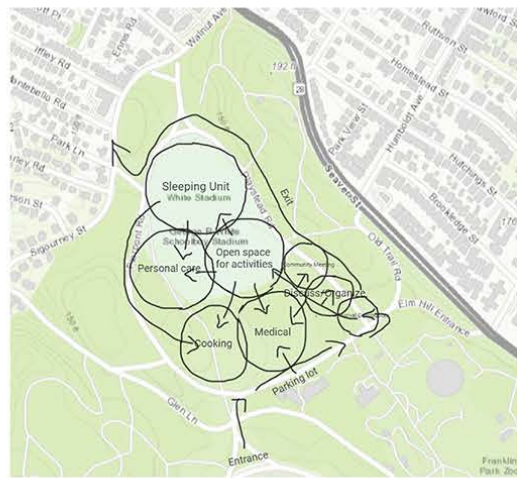
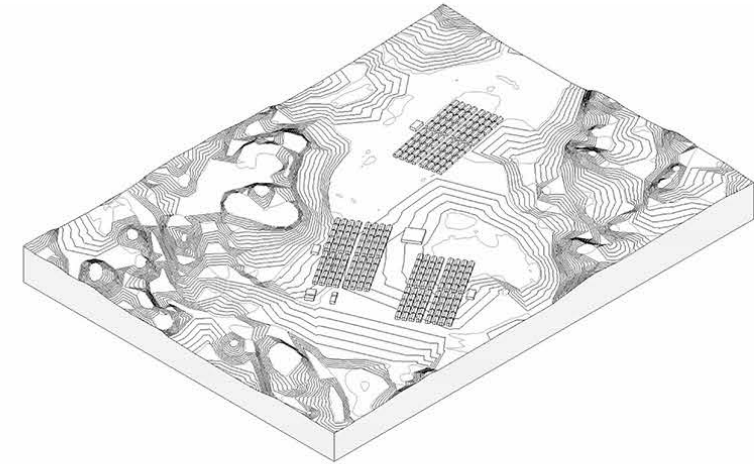




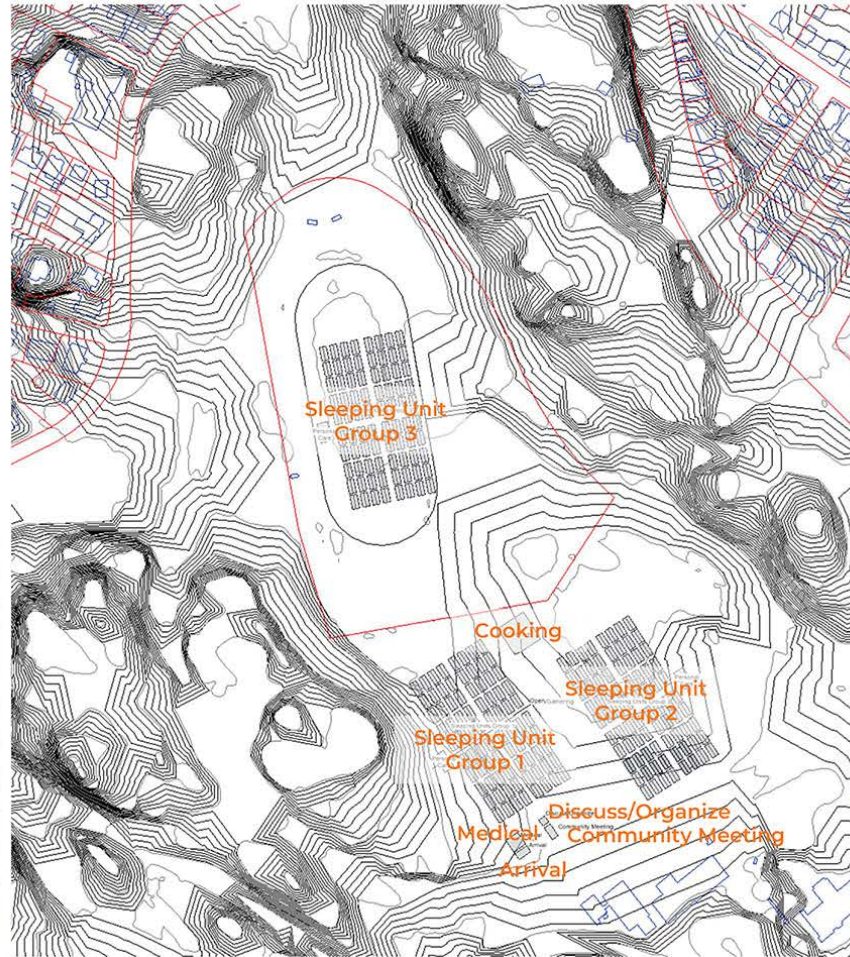


### Site Study Diagram

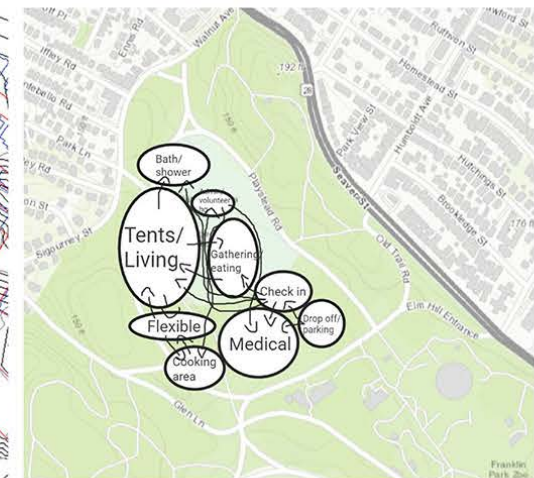
- Bubble Diagram studies considering all the program requirements along with site requirements
- Complex is designed for 1000 people



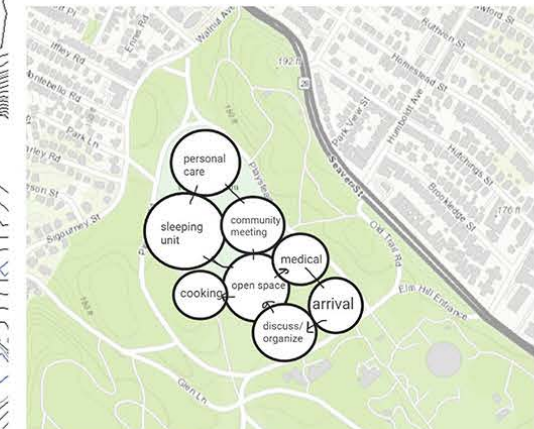
**Juliette**



**Genevieve**



**Ben**



**Eva**

[View full presentation deck from Team 5 >>](#)



# TEAM 6 – ROXBURY COMMUNITY COLLEGE

## Team Lead

Megan Denison, H+O

## Discipline Leads

### Architecture

Timothy Reagen, Stantec

### Construction Management

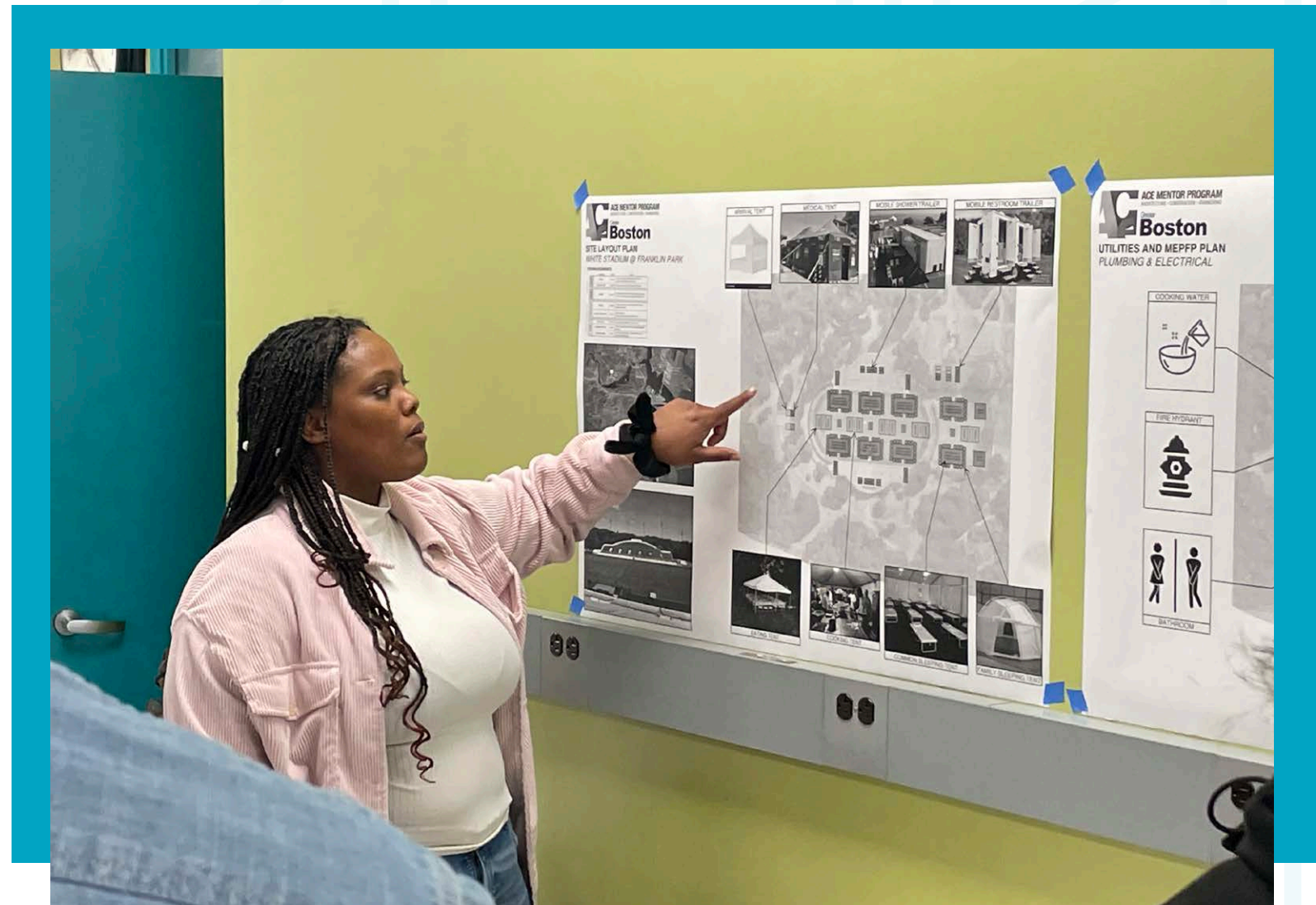
Seth Cawoski, Gilbane

### MEP Engineering

Tara Strosser, ARUP

### Structural Engineering

Megan Denison, H+O





**SITE LAYOUT PLAN**  
WHITE STADIUM AT FRANKLIN PARK, JAMAICA PLAIN

**Project Description:**

Boston has just experienced a disastrous hurricane event that has wiped out a significant portion of the city. The mayor is calling for help in creating an Emergency Response Site to assist in providing temporary shelter and community, while the city rebuilds.

**Project Parameters:**

- Set up time: one week
- Duration of camp: 45 days

**Project Assumptions:**

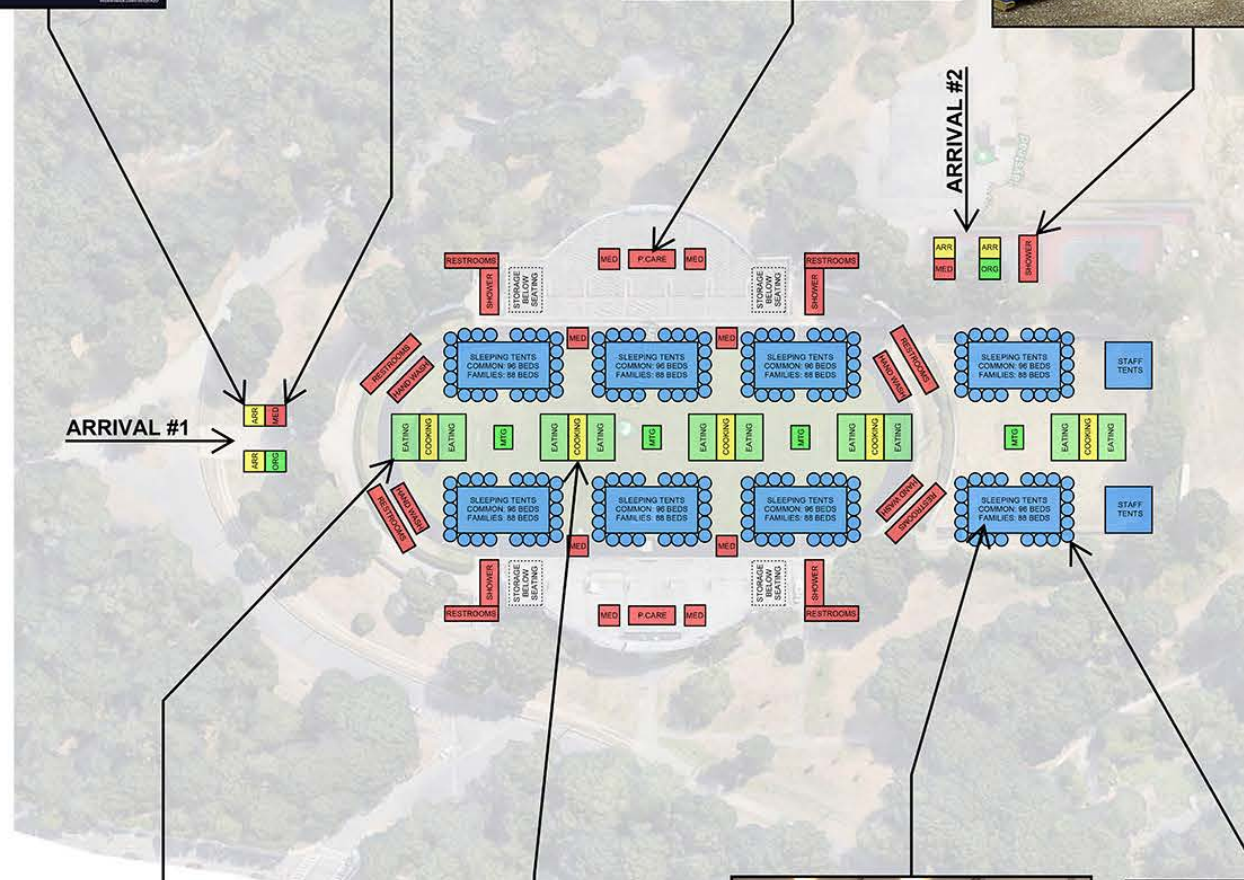
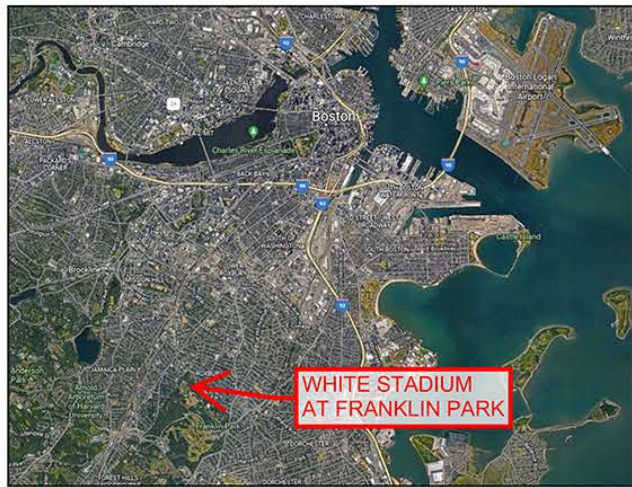
- Summer/Fall Season
- No power or water

**Site Selection:** White Stadium at Franklin Park

- Benefits:**
- 130 feet above sea level
  - Stadium provides protection for camp
  - Field provides stable ground, sloped for drainage

**PROGRAM REQUIREMENTS**

	PROGRAM	AREA	NOTES
SUPPORT	MEDICAL	500 SF	Area for mental and physical assessment for new arrivals and emergency response team
	PERSONAL CARE	1000 SF	Area for personal hygiene and washing of clothes
SHelter	SLEEPING	500 SF	Per family unit: consider multi, individual or group units. How are they interacting or organizing with each other?
MULTIPURPOSE	COOKING	1000 SF	Area for emergency response team to cook for those settled or displaced
	ARRIVAL / DISTRIBUTION	400 SF	Receiving families Display for information, communication, etc.
INDOOR / OUTDOOR	OPEN SPACE	1000 SF	Active play, group interaction, reflection, etc.
	COMMUNITY MEETING	500 SF	Area for community and emergency response leadership meetings
	DISCUSS/ORGANIZE	250 SF	Area for goods distribution / communication, see into arrival / distribution space



[View full presentation deck from Team 6 >>](#)



# TEAM 7 – SMMA

## Team Lead

Anthony Jimenez, SMMA

## Discipline Leads

### Architecture

Michela Maczko, SMMA

### Site/Civil Engineering

Daniel Clasby, SMMA

### Construction Management

Rafael Rodriguez Jr, Turner

### MEP Engineering

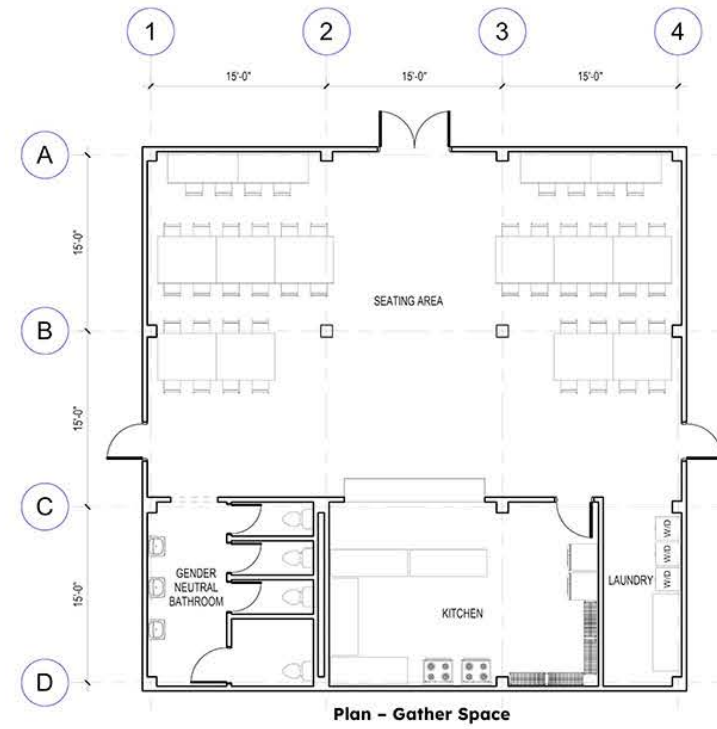
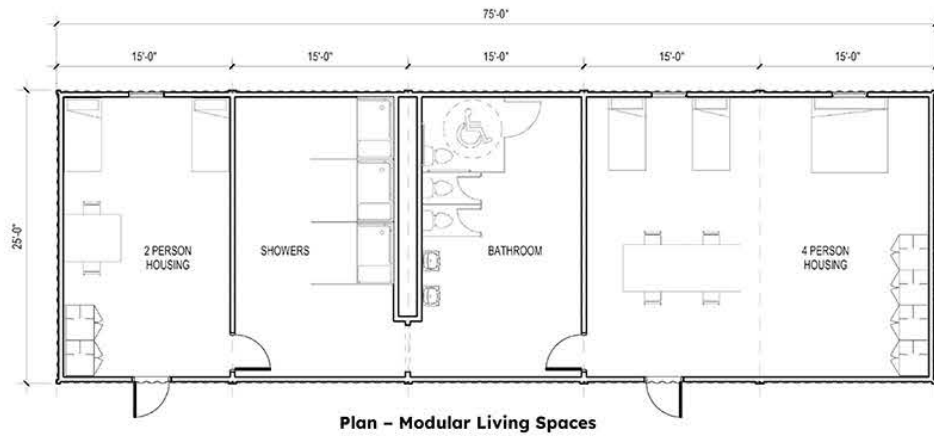
Charles Gibson, SMMA

### Structural Engineering

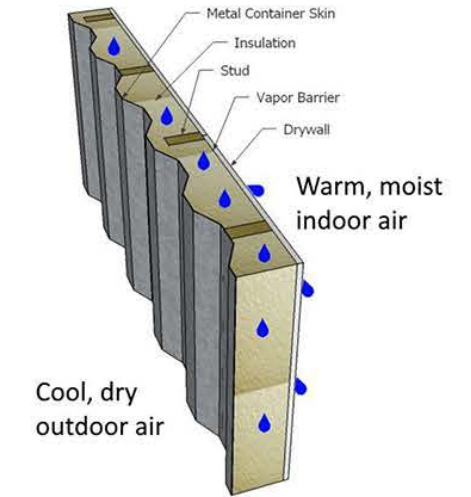
Colin Hug, KL&A Engineers  
& Builders



## DESIGN PLANS



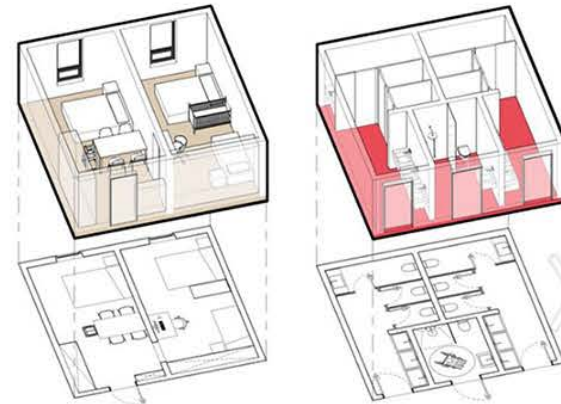
## WALL ASSEMBLY



## PRECEDENTS



Pre-fabricated metal barn



Balbek Bureau's Flexible Town System

MODULAR LIVING SPACES



Puma City, Shipping Container Store

[View full presentation deck from Team 7 >>](#)



## CONSTRUCTION SITE VISITS

A huge thank you to Suffolk Construction for welcoming our students for tours of the Northeastern University science and laboratory building site on three afternoons in December 2022. We started at the top of the building and worked our way down, seeing the stages of construction in real time. We learned a lot!

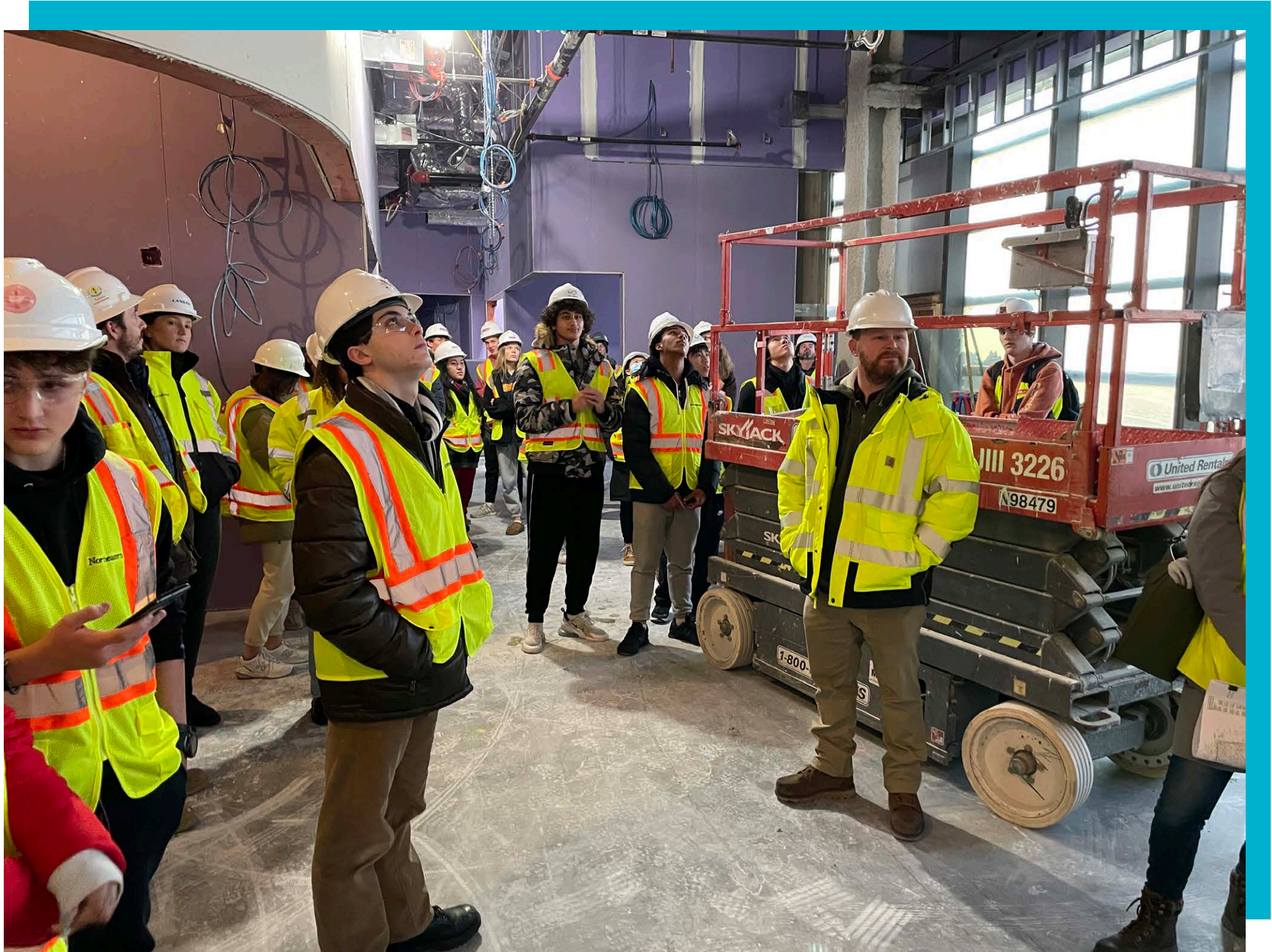
Special shout out to ACE lead mentor Jess Rampino, Assistant Project Manager at Suffolk, for arranging the tours.

*“[My construction site visit to Northeastern] caused me to ask myself questions I hadn't thought of before, like "What lies behind my plaster walls? What allows the weight we place on floors to remain in place? What are the components that put everything together around me?" My eyes opened.”*

*– Arn C, ACE Class of 2023*









## A RECORD NUMBER OF SCHOLARSHIPS

Since ACE started our affiliate in Boston in 2007, we have awarded \$1,267,500 in scholarships to 214 graduating seniors to use in college, university, and trade school. This year, ACE awarded \$210,000—a record figure—in college scholarships to seniors from the Class of 2023 who plan to study architecture, construction management, engineering, and related fields. ACE scholarships may also be used for trade school in the skilled building trades.

*“My participation in the ACE program has been a transformative experience that helped me to discover my true passion. It made me realize that engineering was the perfect fit for my skills, interests, and aspirations, and I am now confident that I have found the right career path.”*

*– Alexander Rosen, scholarship recipient, Class of 2023*



*Kidus Desalegn, \$20,000 recipient, with his mentor Anthony Jimenez of SMMA and Justin MacEachern of Boylston Properties, the scholarship sponsor. Kidus is studying engineering at Northeastern University.*



**Name** | Years in Ace | Intended Major | **Scholarship Award**

School

---

**Kidus D.** | 4 | Mechanical Engineering | **\$20,000**

Cambridge Rindge and Latin School

---

**Emmett H.** | 3 | Mechanical Engineering | **\$15,000**

Boston Latin School

---

**Sara S.** | 4 | Landscape Architecture | **\$15,000**

Cambridge Rindge and Latin School

---

**Ruben M.** | 3 | Civil Engineering | **\$15,000**

John D. O'Bryant School of Math and Science

---

**Victor L.** | 3 | Mechanical Engineering | **\$15,000**

New Mission High School

---

**Sabrina X.** | 2 | Architectural Studies or Civil Engineering | **\$12,500**

Melrose High School

---

**Arn Jones C.** | 2 | Mechanical Engineering | **\$12,500**

Neighborhood House Charter School

---

**Sofia G.** | 1 | Civil Engineering | **\$10,000**

Boston Latin Academy

---

**Alexander R.** | 2 | Mechanical Engineering | **\$10,000**

Melrose High School

---

**Isabel V.** | 2 | Architecture | **\$10,000**

Melrose High School

---

**Magdalena T.** | 2 | Architecture | **\$10,000**

Melrose High School

---

**Charly C.** | 1 | Architecture, Industrial or Interior Design | **\$10,000**

Newton North High School

---

**Leighton F.** | 2 | Structural or Civil Engineering | **\$10,000**

Westford Academy

---

**Juan-Manuel B.** | 1 | Architecture | **\$8,000**

Boston College High School

---

**Benjamin T.** | 2 | Architecture | **\$8,000**

Boston College High School

---

**Raysa M.** | 1 | Architecture | **\$2,000**

Boston Community Leadership Academy

---

**Sadye C.** | 1 | Psych or Engineering | **\$2,000**

Boston Latin Academy

---

**Wilson Z.** | 1 | Civil Engineering | **\$2,000**

Boston Latin School

---

**Gabriella T.** | 1 | Mechanical Engineering | **\$2,000**

Boston Latin School

---

**Wilmaris G.** | 1 | Architecture | **\$2,000**

Brighton High School

---

**Jason H.** | 1 | Mechanical Engineering | **\$2,000**

John D. O'Bryant School of Math and Science

---

**Thomas C.** | 1 | Engineering | **\$2,000**

John D. O'Bryant School of Math and Science

---

**Niall Powers O.** | 1 | Engineering | **\$2,000**

The Newman School

---

**Daniela A.** | 1 | Computer Science/Civil Engineering | **\$1,000**

Boston Latin Academy

---

**Trent K.** | 1 | Engineering | **\$1,000**

Boston Latin School

---

**Lena F.** | 1 | Computer Science | **\$1,000**

Brookline High School

---

**Tewoflose F.** | 1 | Mechanical Engineering | **\$1,000**

Cambridge Rindge and Latin School

---

**Joseph L.** | 1 | Mechanical Engineering | **\$1,000**

John D. O'Bryant School of Math and Science

---

**Ryan B.** | 1 | Construction Mgmt. | **\$1,000**

The Cambridge Maignon School

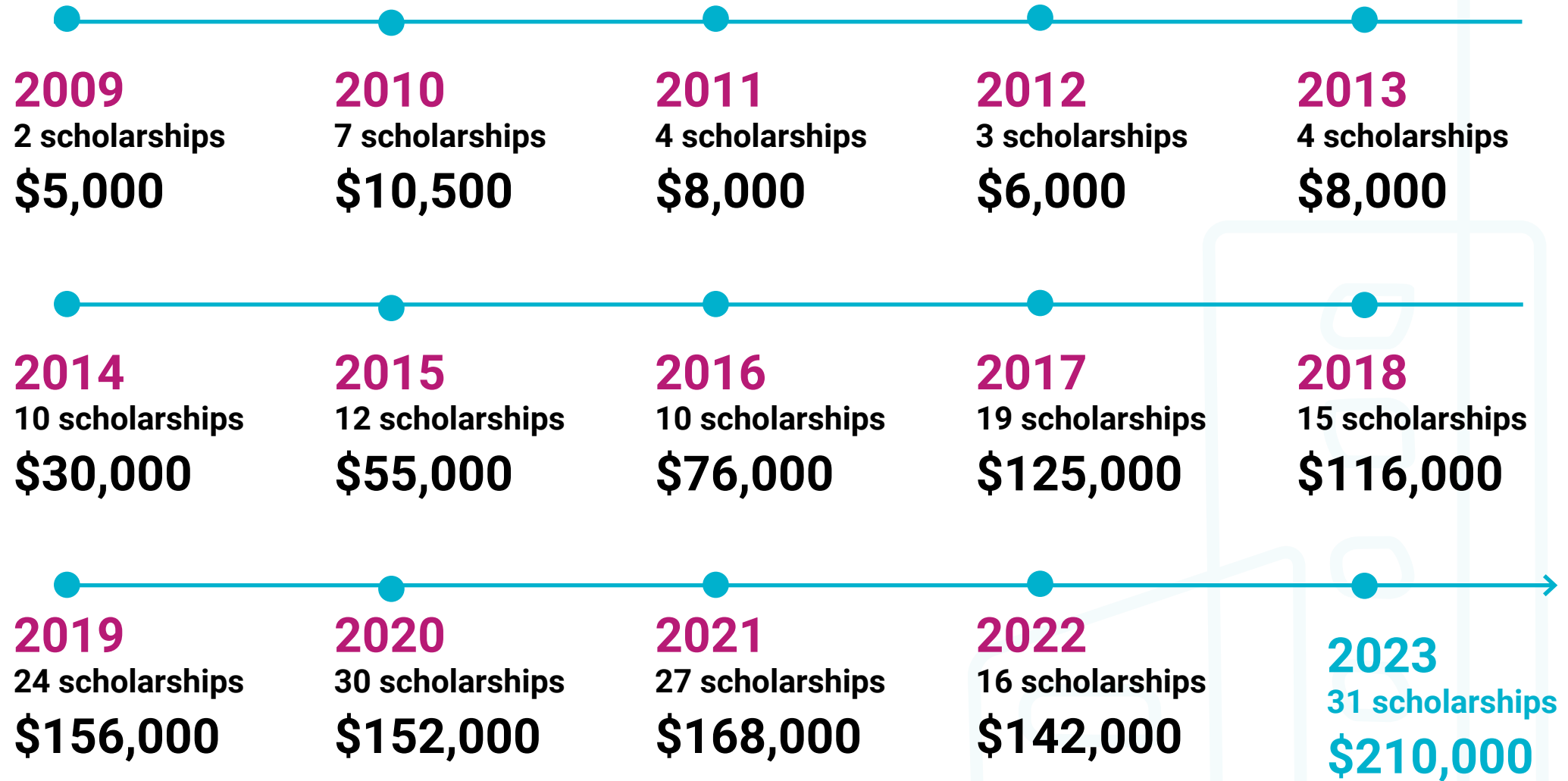
---

**Total Scholarships Awarded**

**\$210,000**



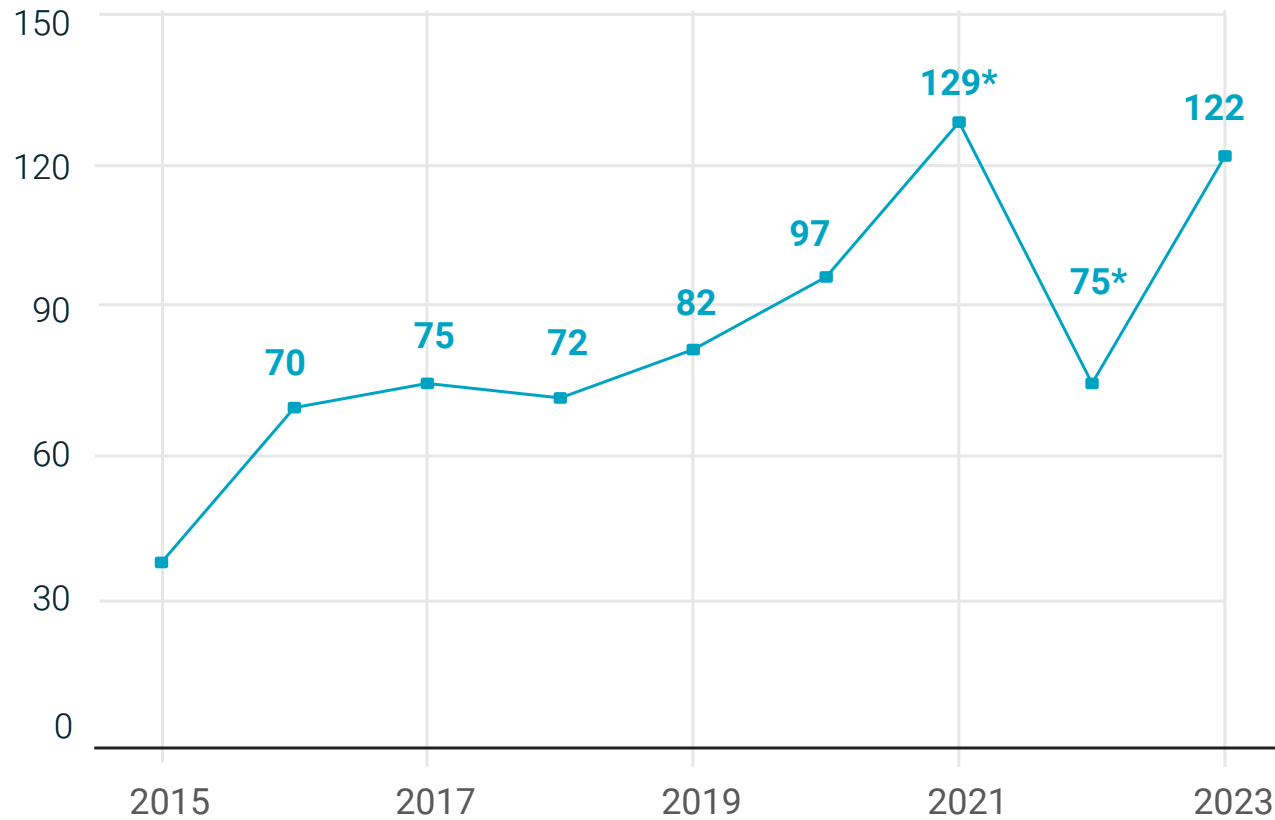
# HISTORICAL SCHOLARSHIP DATA





# BY THE NUMBERS

Number of Students Completing the Program by Year



\* remote learning years

ACE met one of its key retention goals in 2023: 82% of the students who attended the first 3 weeks of the program completed the full 15-week challenge.

## First Language

- 82** English
- 9** Chinese
- 18** Spanish
- 13** Other (Vietnamese, Arabic, Amharic)

## Race and Ethnicity

- 20** Latino
- 30** Black including AfroLatino and Black/Native Am
- 36** White
- 21** Asian
- 3** Middle Eastern
- 12** Biracial/ multi/ other

## Gender

- 65** Male
- 55** Female
- 2** Non-Binary

## ALUMNI PROFILE: HUNESSA LOUIS

Hunessa Louis was a high school sophomore at The Newman School when she joined the ACE team then at the Benjamin Franklin Institute of Technology. Hunessa says ACE gave her the opportunity to try some new things that she knew little about; she loved that it was hands on. Her favorite ACE role was that of landscape architect for a new Boston park with a “Boston Strong” theme, during her last year in the program. Hunessa managed to complete internships at Simpson Gumpertz & Heger, Consigli Construction, and Wayne J. Griffin Electric all before her freshman year of college. A \$10,000 scholarship from ACE Greater Boston helped her land at the University of Massachusetts Lowell, where she obtained her BS in Civil Engineering in May, 2023. Today, Hunessa specializes in Project Management with Schneider Electric, an industry leader in transforming energy management for a more sustainable future.



*Hunessa Louis working with Wilson Villafane (student) and Grace Lancto (Mentor).*

## ALUMNI PROFILE: SARA KAHSAY SOLOMON '23

Sara Solomon joined ACE in 2019, one month in her freshman year at Cambridge Rindge and Latin High School. Her first interest was construction management, but after 3 years at 3 different ACE sites, she knew she was bound for a career in architecture. Sara’s favorite projects at ACE were a library at the Museum of Fine Arts and the design of a community room at Northeastern University. Sara also thanks ACE for her growing passion for volunteerism, community involvement and leadership. Sara received a \$15,000 scholarship from ACE to support her studies at the University of Connecticut. She is majoring in Urban Studies and plans a future designing public spaces for community benefit.



*Sara Kahsay Solomon*



## SCHOOL PARTICIPATION DATA

School	Students	BPS
Academy of the Pacific Rim	1	
Algonquin Regional High	1	
Boston College High School	2	
Boston Community Leadership Academy	1	
Boston Latin Academy	8	<b>X</b>
Boston Latin School	9	<b>X</b>
Brighton High	1	<b>X</b>
Brookline High School	11	
Cambridge Rindge and Latin School	16	
Charlestown High	1	
Chelsea High	1	
Community Charter School of Cambridge	3	
East Boston High	2	<b>X</b>
Excel Academy	5	
Fenway High School	1	<b>X</b>

School	Students	BPS
John D. O'Bryant School of Mathematics and Science	23	<b>X</b>
Josiah Quincy Upper School	1	<b>X</b>
Melrose High School	10	
Neighborhood House Charter	1	
New Mission High	2	
Newton North	1	
Newton South	1	
North Quincy High	1	
Prospect Hill Academy	6	
Somerville High	1	
The Cambridge Matignon School	4	
The Newman School	5	
Westford Academy	1	
Winchester High	1	
Worcester Technical	1	<b>X</b>

## TRADE DAY



Thank you to DPR Construction, Gilbane Building Company, Cannistraro Plumbing, W. L. French Excavating Corporation, and Cambridge Rindge and Latin School for allowing students to try out the trades. This year, W.L. French provided Celtics tickets in a raffle for the students who participated in every station, which started a buzz from when the students first arrived.



# ACE NETWORKING EVENT

On June 22, 2023, we came together for our 9th annual ACE Networking Event, raising \$636,500 to support ACE Mentor Program's critical mission. We are grateful to Secretary of Labor Lauren Jones for her kind remarks and her recognition that students need mentors to figure out how to join our professions. Thank you to Boylston Properties for being our presenting sponsor again, and for providing the fuel to allow ACE to grow. Your leadership has brought so many other firms into our orbit.



## Fun facts:

**\$636,500** Raised  
to accelerate ACE Mentor's growth.

**400** Attendees  
Well, 399 to be exact. You came, you networked, and you made it fun to do good.

**168** Sponsors  
One hundred and sixty-eight sponsor firms came together to bring A/E/C opportunities to our students.

**1** Mission  
Our lodestar, our fixed point we move toward, is to bring more young people into careers in architecture, engineering, design, and CM, for a brighter future for our industry.



## GRANTS UPDATE

ACE gratefully acknowledges grant funding from the following foundations in 2023:

---



### Cummings Foundation

Cummings Foundation

**\$100,000**

---

The Avison Fund at the Boston Foundation

**\$10,000**

Mass. Service Alliance

**\$5,000**

---

Stanley Black and Decker –  
Empower Makers Trades Day Grant

**\$4,361**

Emily Hall Tremain Foundation

**\$2,500**

---

ACE also was the recipient of the 2022  
Embarc Classic Golf Tournament funding of

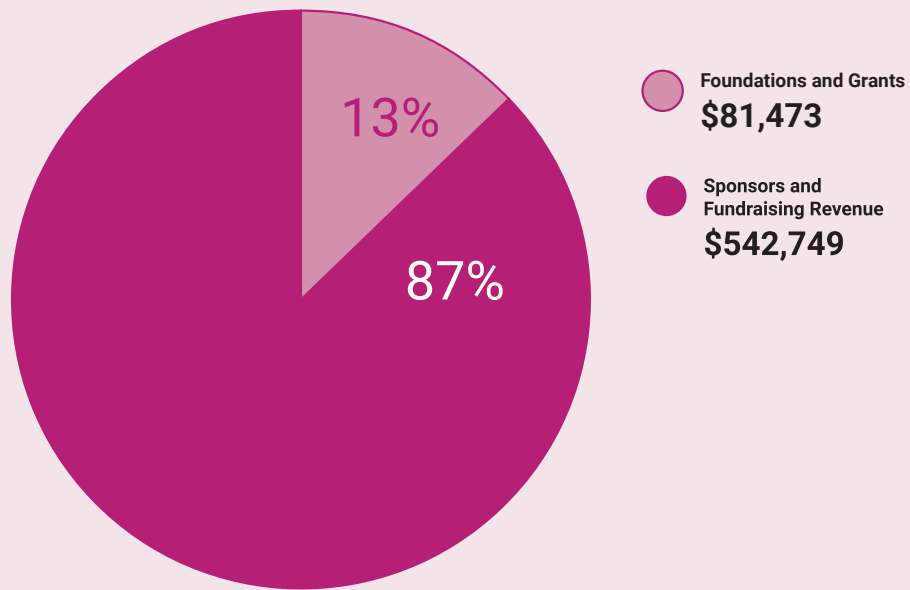
**\$19,238**

---

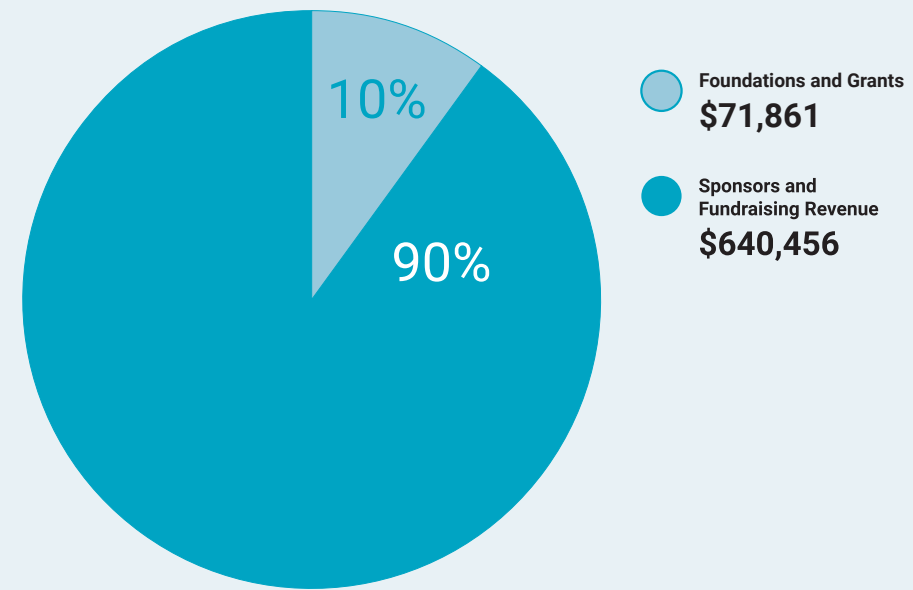


# FINANCIAL STATEMENTS

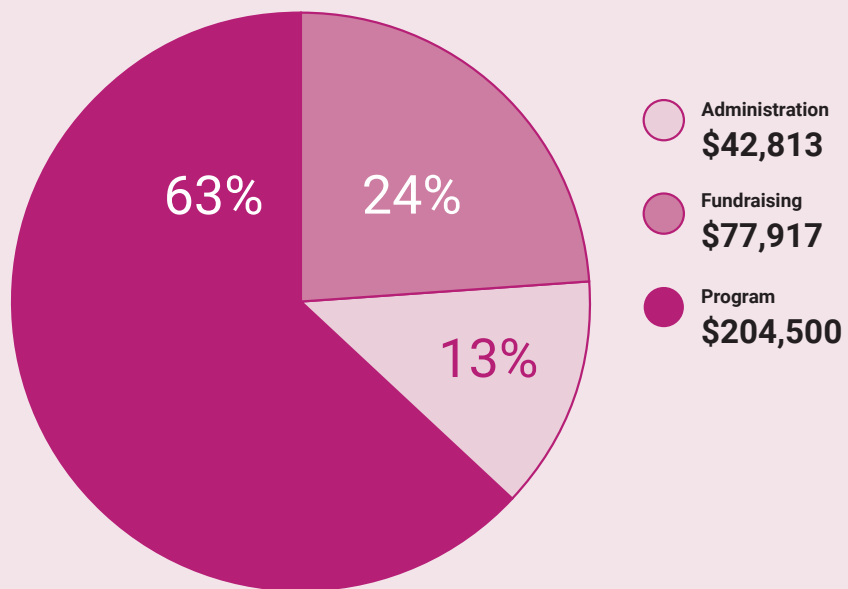
2022 Revenue



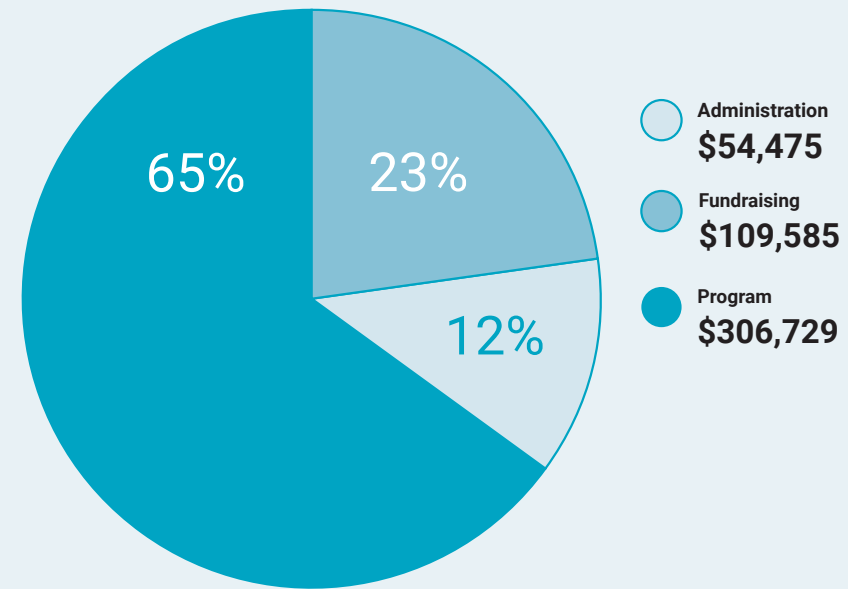
2023 Revenue



2022 Expenditures



2023 Expenditures



# THANK YOU TO OUR SPONSORS

\$30,000



**BOYLSTON  
PROPERTIES**

\$25,000

**PROCOPIO**

\$15,000



**Plumb House  
INC.**  
MERIT SHOP BUILDS BEST

\$10,000

**PCA**

**Dimond  
Family  
Foundation**



**CONSIGLI  
FOUNDATION**

**MORIARTY**

**SGH**

**J.P.Morgan**





# THANK YOU TO OUR SPONSORS

**\$7,500**



**HAROLD BROTHERS**  
MECHANICAL CONTRACTORS, INC.



**\$5,000**

Stantec  
Jones Lang Lasalle  
Claremont Companies  
Clayton & Julianne Rose  
D.A. Bosworth Companies  
David and Susan Leathers Giving Account  
Eastdil Secured  
Embarc Design  
Exposure Lighting  
Group One Partners  
Hitch Family Charitable Fund  
Jared and Ann Chase Charitable Fund  
NECM  
Outdoor Perspectives  
Oxford Properties  
Sherin and Lodgen LLP  
The Architectural Team

The Durkin Company  
The Wilder Companies  
Arup  
Atlantic Management Corp  
SMMA  
Cassum Family Foundation  
Charlie Baker  
Robert Kustel  
Perkins and Will  
Siena Construction  
Columbia Construction  
Aldon Electric  
Superior Plumbing  
The Select Group  
Shawmut  
New England Finish Systems

**\$4,000**

Cushman & Wakefield

**\$3,500**

Lighthouse Electrical  
Contracting, Inc.

**\$3,000**

Berkeley Building Co  
CBRE  
General Insulation  
Pilgrim Parking  
Currie Project Management  
H+O  
Hemenway & Barnes LLP  
Sterling Construction  
Cox Engineering

# THANK YOU TO OUR SPONSORS

**\$2,500 - \$1,250**

C3  
John Boyle  
SGA  
Boathouse  
Boston Urban Partners  
Bozzuto Management Co  
Brian & Margaret McNeil  
Brick Inc.  
Childs Bertman Tseckares Inc./CBT  
Architects  
Continental Contractors, Inc.  
Donald Perrin  
Goulston & Storrs  
Haakon Industries Ltd  
HDS Architecture  
ICO Energy and Engineering, Inc.  
John & Susan Spooner  
Margulies Perruzzi  
Northstar  
Peter & Kathy Joseph  
PR Restaurants, LLC  
PROCON  
Relco  
Sheehans Office Interiors  
Velney Development

All State Waste  
Langan Engineering & Environmental  
Services, Inc.  
Business Interiors Floor Covering  
Commodore Builders  
J. Calnan & Associates  
McPhail Associates  
RJ O'Connell  
TG Gallagher  
ARX Urban  
Pimentel Construction Co. Inc.  
S&F Concrete  
Vivo  
Kearsarge Energy  
BR+A  
Avid Engineers  
Eastern Metal Building Products  
DPR Construction  
Sullivan and McLaughlin Companies  
New England Plumbing Solutions  
W.T. Kenney Co., Inc.  
BLW Engineers  
AmConCorp  
Bohler Engineering  
Walter A Furman Co.

**\$1,000**

Cornerstone Design Build  
AECOM Tishman  
ARCO  
Copley Wolff Design Group  
CRC Construction Management, LLC  
Dynasty Electric  
HTS, DXS, & Control Technologies  
Kaloutas & Co., Inc.  
Krokidas & Bluestein LLP  
LC Anderson HVACR  
RJ Donovan Group  
SCB Architecture, Interiors & Planning  
Sea-Dar Construction  
SignWorks Group  
Specialty Services of New England  
Tria Architects  
Walker & Dunlop  
Charles K Gibson  
E.J. Callahan & Associates  
Arcadis  
Boston Sand and Gravel  
Feldman Geospatial  
Vanasse & Associates  
AEI Engineers, Inc.  
BrightView Landscape Development  
Gilbane  
JDC Demolition  
Reflex Lighting  
"Sanborn, Head & Associates, Inc.  
Nitsch Engineering  
Thornton Tomasetti  
VHB  
Michael D'Angelo Landscape  
Architecture LLC  
Corporate Mechanical  
D.R. Howard Plumbing



# THANK YOU TO OUR SPONSORS

## Up to \$1,000

Wozny Barbar & Associates, Inc.  
John A. Penney Co., Inc.  
Star Sales  
Pinnacle Piping & Service Corp  
Citizens Bank  
Conant Design Group  
DLA Piper LLC  
Hilco Redevelopment Partners  
Interstate Electrical Services Corporation  
PCS LLC  
Bowdoin  
RG Vanderweil Engineers, LLP  
RW Sullivan Engineering  
Hacin Architects  
Sleeping Dog Properties  
The Aldrich Family  
John M. Kennedy Company  
Wright Architectural Millwork  
the O'Connor-Phelps family  
the Rattigan Family  
Salem Glass  
Callahan Construction Managers  
Central Ceilings  
CHA  
Corderman Construction  
Dellbrook  
Dimeo Construction Company  
Essex Builders  
G and C Concrete  
Gables Residential  
McCusker Gill  
Porter24  
Pro Con Inc.  
Schneider Electric  
Suffolk / Millenium Partners  
VPNE  
W. Morris Merchants  
52x Consulting  
Ayers Saint Gross  
Bald Hill Builders  
Boston Properties  
Columbus and Over Group  
Davis Management Co  
Ducts Inc.  
Ellis Fire Protection  
Eolian Energy  
Ferguson Neudorf Glass  
Frederic Wittmann  
George Riedel  
Helco Electric  
Ipswich Bay Glass  
J Derenzo  
Jacobs  
Jim Luchars  
Joseph Fallon  
KONE

Lincoln Properties  
Performance Electric  
PH Mechanical Corp  
Thomas and Donna May  
Tsoi Kobus Design  
Venture Forward LLC  
Waypoint KLA  
Xquisite Landscaping  
Catamount Management  
Donovan Hatem  
Northeast Geotechnical, Inc.  
Riemer and Braunstein  
Haley & Aldrich  
Skanska  
Mark Ritchie Woodworking  
Scalora Consulting  
Anonymous (Breakthrough, Tishman Speyer)  
Associated General Contractors of  
Massachusetts  
Building Trades Employer's Association  
Evermore Lighting and Power  
General Air Conditioning and Heating  
Horner  
Jerez LLC  
KO Stone  
Leggat McCall Properties  
Lynnwell Associates  
McDonald Electric  
Synergy Contracting  
Tim Stoll of Breakthrough Properties  
TJ McCartney Inc.  
United Civil  
Intertek  
Bond Building  
Redgate  
A. Murphy  
Apex Lighting Solutions  
Apex New England Construction  
Boston Global Investors  
Boston Light Source  
Emerson Swan  
Excell Construction  
FoxRock Properties  
Graybar  
Illuminate  
JM Brown  
Lake Contracting  
MGM Electrical  
Northeast Electrical  
Standard Electric  
Turtle & Hughes  
WB Engineers  
Marcus Partners  
Blakeslee  
Citywide Contracting LLC  
Code Red Consultants

Erland Construction  
Integrated Interiors  
John K. Anderson and Christina Marcin-  
Anderson (via National Philanthropic Trust)  
Leahy Landscaping  
Leverage Design  
Matthew James Condon  
Professional Electric  
RISE Construction  
Studio Troika  
Tecnoglass ES Windows Foundation  
Tremont Construction  
Superior Contracting Services  
Acentech  
Buro Happold  
Cosentini  
LeMessurier  
Lerch Bates  
smithgroup  
Symmons  
Victaulic  
JL Marshall & Sons  
K&K Acoustic  
Kamco  
Limbach  
M. DiSandro & Sons Masonry, Inc./ NRD  
M.L. McDonald Sales Company, LLC  
Marguerite  
Marshall Roofing and Sheet Metal Co Inc  
McCloskey Mechanical Contractors  
Siemens  
SOEP  
The Woodworks  
Tightline  
Walsh Mechanical  
Wayne J. Griffin  
Allegheny  
GeoEngineers  
Grinnell Mechanical  
Platinum Fire Protection  
Quinn Brothers Iron Works  
CM&B  
OTJ Architects  
WB Engineers  
Daniel Demarco & Assoc  
Lido Lighting  
Wallboard Supply  
American Contractors Corp.  
Canatal  
Causeway  
Florence Electric  
Middlesex Glass  
National Granite  
Save-on-Wall  
SRC Roofing Inc  
USA Demo

Ferguson Waterworks / ACF Environmental  
Leslie Saul & Assoc  
Planeta Design Group  
Structure Tone  
CV Properties  
Gensler  
Jensen Huges  
STV  
WSP  
Atlantic Contracting & Specialties  
Charles D Sheehy  
Finegold Alexander  
GEI Associates  
HLB Lighting  
HydroInternational  
ICON Architecture  
Kantar  
Lam Partners  
LOC Assoc/Generis Collective  
MacDonald Electric  
Martignetti Construction  
Mikyong Kim Design  
Mtech NE LLC  
New England MCA / MSCA  
Newman Associates  
NV5  
OJB Landscape Architecture  
Performance Contracting Inc. (PCG)  
Republic Supply  
Selbert Perkins  
VDA  
Vidaris  
Women in Restoration & Engineering (WIRE)  
Cube 3  
Landworks  
Armstrong World Industries  
Gavin Associates  
Joe Mason & wife (need name)  
Lee Kennedy Company  
National Gypsum  
United Rentals  
Waltham Lime  
Clifford & Galvin  
Contract Flooring  
Greenwood Industries  
Manafort Precision  
Maxim Crane  
PJ Spillane  
The Green Engineer  
Fabrizio  
Frontline  
Lab Furniture Installations & Sales  
Northeast Recycling  
Porier & Springer  
Red Line Wall Systems  
Sunbelt Rentals

## PARTICIPATING FIRMS

AEI  
AmConCorp  
Arup  
Beals and Thomas, Inc  
Berkeley Building Company  
Bohler Engineering  
bosNOMA  
Boston Children's Hospital  
Boylston Properties  
BuroHappold Engineering  
Cannistraro  
Cardi  
City of Somerville  
City of Springfield  
Columbia Construction Company  
Consigli Construction  
Cosentini Associates  
DPR Construction  
E.J Callahan & Assoc.  
e4h Architecture  
Elkus Manfredi Architects

Finegold Alexander Architects  
Gensler  
Gilbane Building Company  
Haley & Aldrich  
Hallam-ICS  
Harvard University  
KL&A Engineers & Builders  
Langan Engineering and Environmental  
Services  
LeMessurier  
Martignetti Construction  
National Development  
New England Finish Systems  
New Leaf Energy  
Payette  
PCA  
Perkins&Will  
Quarterra  
RMF engineering  
Sam Kachmar Architects  
SGA

Shawmut  
Shepley Bulfinch Richardson & Abbott Inc.  
Simpson Gumpertz & Heger  
SKANSKA  
smithgroup  
SMMA  
SourceBlue, LLC (Turner Construction)  
Stack + Co  
Stantec  
Structure Tone  
STV Inc  
Suffolk Construction  
TEC  
The Harder Group  
Thornton Tomasetti  
Turner Construction Company  
Veitas Engineers  
W. L. French Excavating Corporation  
WSP USA



## BOARD MEMBERS

Alejandro Miranda – **Boylston Properties**  
Alison Stanton – **Turner Construction Company**  
Anthony Jimenez – **SMMA**  
Brian Lawlor – **SMMA**  
Brian Postlewaite – **City of Somerville**  
Brooke Shannon – **Simpson Gumpertz & Heger Inc.**  
Casey Williams – **Simpson Gumpertz & Heger Inc.**  
Chris Previte – **E.J Callahan & Assoc.**  
Christopher Cheu – **SKANSKA**  
Cory Mills – **Perkins + Will**  
Elena Fajardo – **Turner Construction Company**  
Elyse Ayong – **Gensler and BosNOMA**  
Hannah Schur – **Langan**  
Holly Ganser – **New Leaf Energy**  
Janine Byrne – **PCA**  
Jen Fries – **ACE of Greater Boston**  
Jeremy Ritzenberg – **Cardi**

Jill Papagni – **DPR Construction**  
Justin Maceachern – **Gilbane**  
Kayla Nassar – **American Construction**  
Kelly Karpinsky – **Shepley Bulfinch Richardson & Abbott Inc.**  
Lysandra Reed – **Haley Aldrich**  
Maitane Sesma – **Consigli**  
Meredith Whalen – **Gilbane**  
Michael Tecci – **Simpson Gumpertz & Heger Inc.**  
Mike Harris – **National Development**  
Mike Kearns – **Shawmut**  
Rafael Rodriguez – **Turner Construction Company**  
Ray Houle – **New England Finish Systems**  
Sedef Doganer – **Wentworth Institute of Technology**  
Thomach Aldrich – **DPR Construction**  
Thu Ngan Han – **Stantec**  
Yordy Tesfaye – **Shawmut**

## INTERNSHIPS

During the summer of 2023, ACE placed 33 high school students and 3 alumni into paid summer internships. Thank you to these firms for hiring ACE students:

Autodesk

BR+A

Bergmeyer

DCVL Design

Justine Sterling Design

Matt Roman Design Build LLC

Studio Draw

Consigli

DPR

Gilbane

Le Messurier

PCA

Perkins & Will

Sasaki

SGH

Studio MLA

Turner Construction

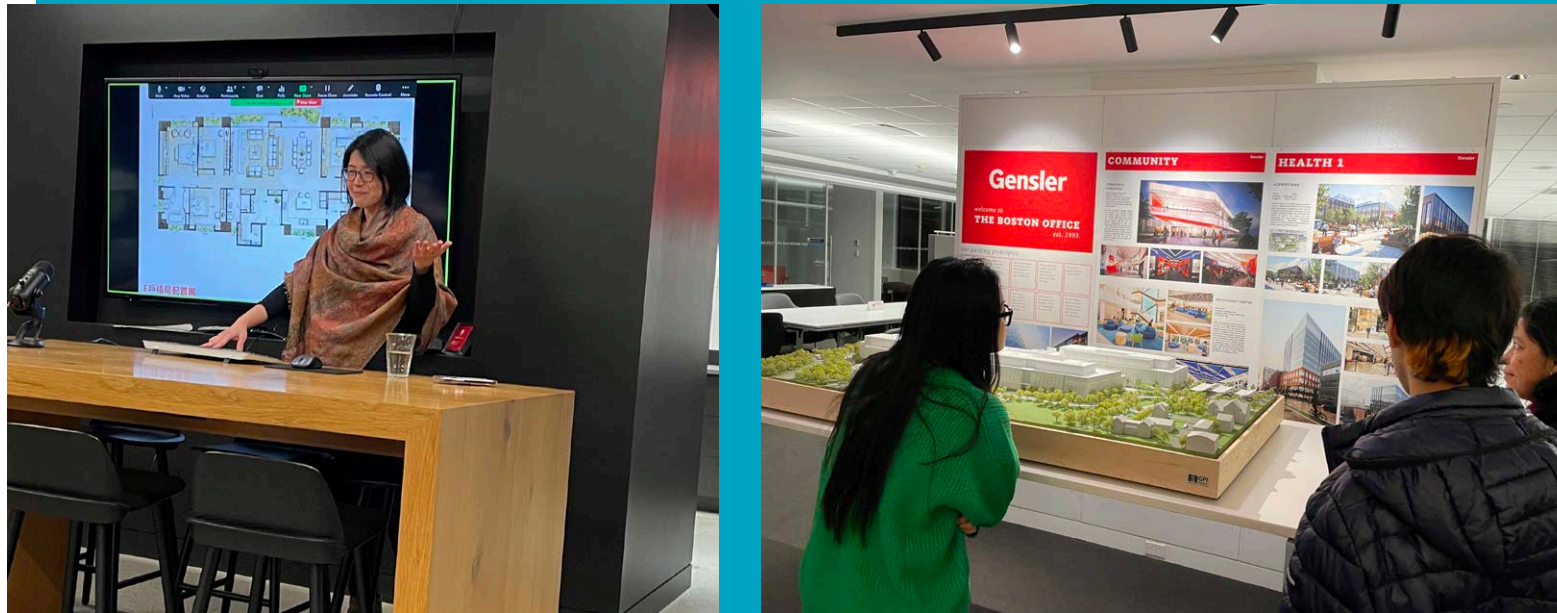


*Ruben Morales, 2023 intern at LeMessurier.*



## PARTNERSHIPS

NOMA (National Organization of Minority Architects)  
SHPE (Society of Hispanic Professional Engineers)  
PWC (Professional Women In Construction)



Thank you to the **National Organization of Minority Architects, Boston Chapter** (BosNOMA) for hosting a series of career panels, including one at Gensler and one at MassArt.



Thank you to **Professional Women in Construction** for hosting a career panel at Langan.



**ACE MENTOR PROGRAM**  
ARCHITECTURE • CONSTRUCTION • ENGINEERING

